



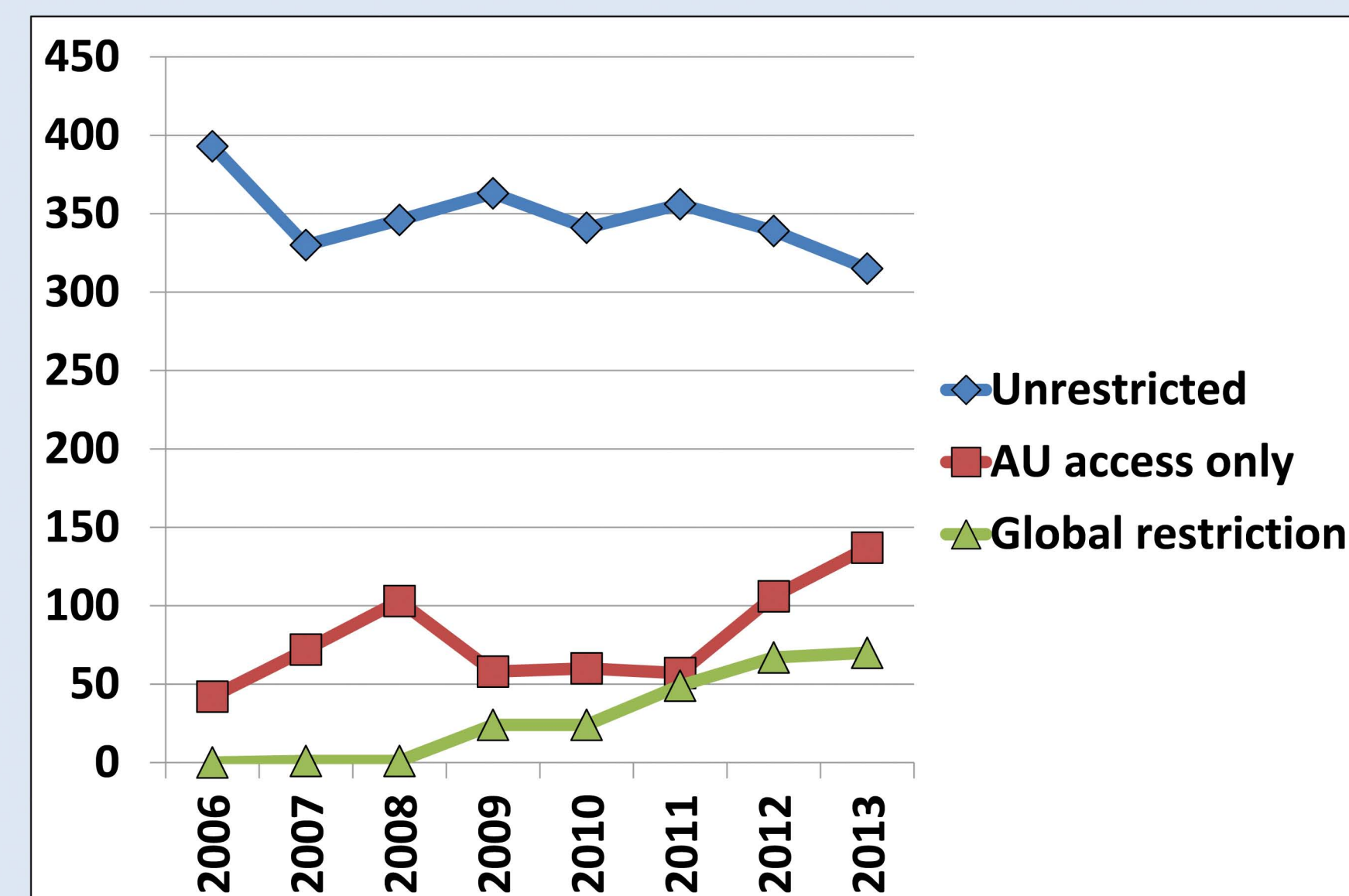
Embargo Periods: How Do They Affect the Use of Electronic Theses and Dissertations?

Midge Coates
Auburn University Libraries

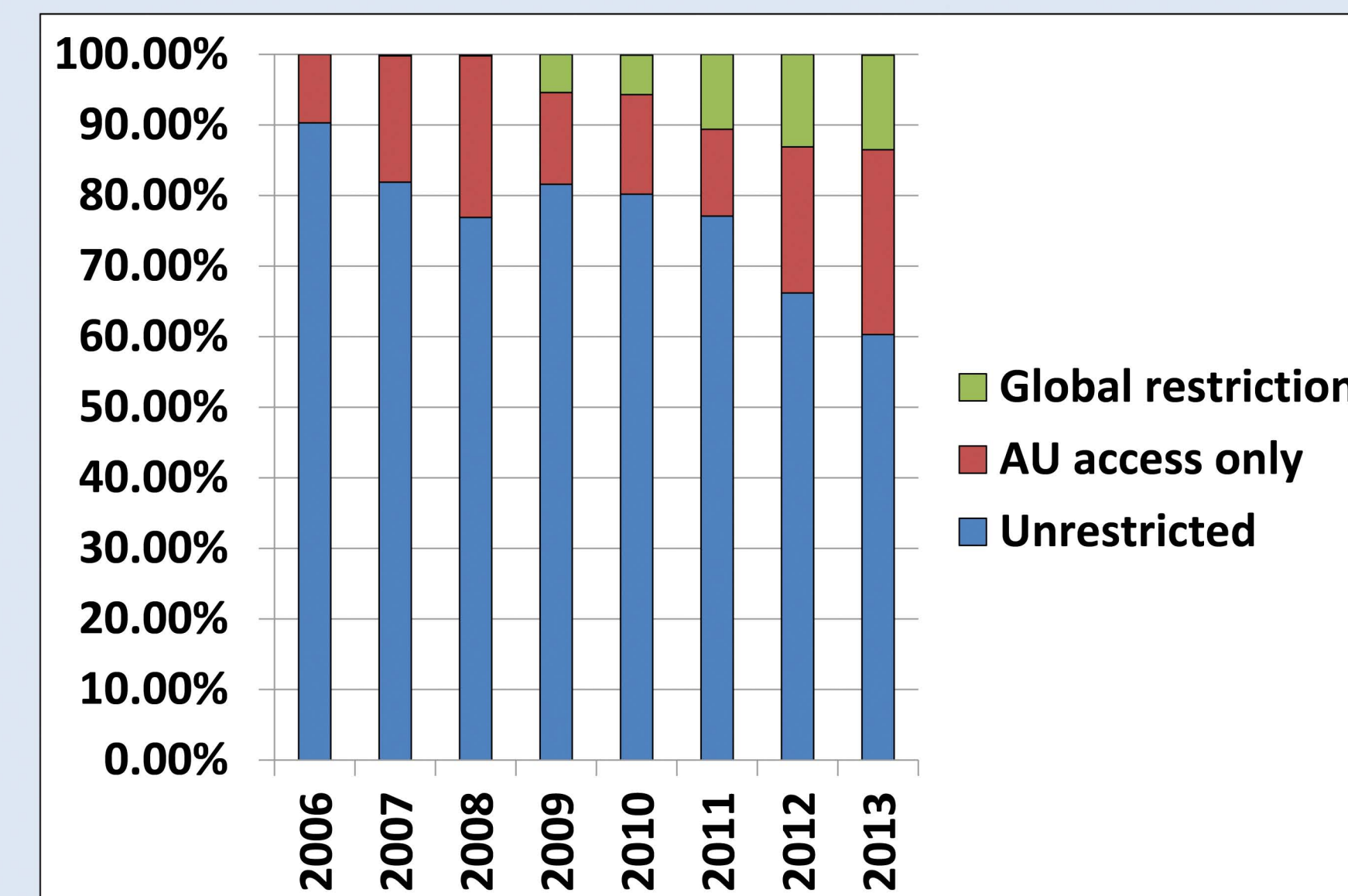


1. Requests for embargo by submitters are increasing.

Embargo Selections



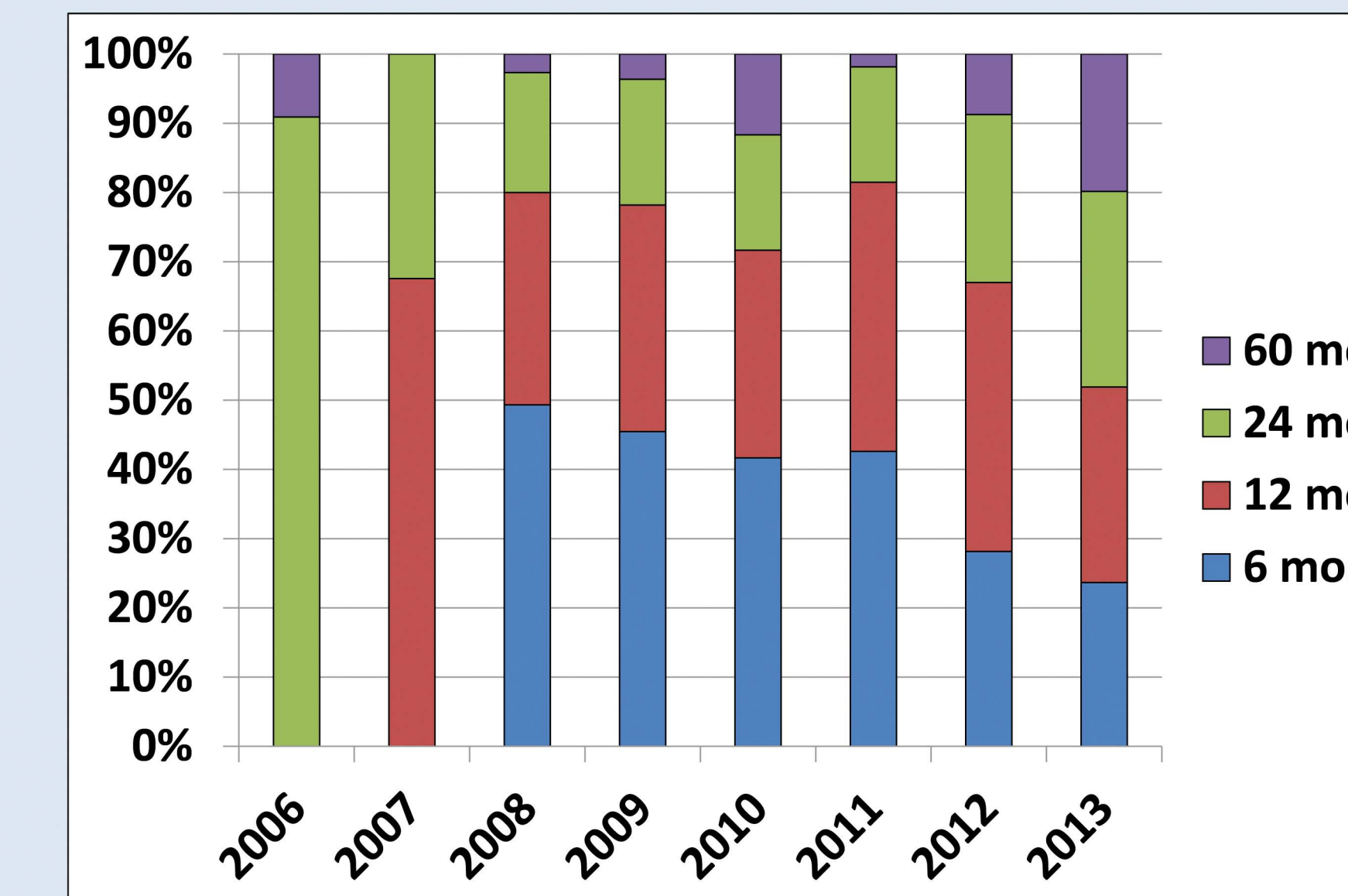
Selections, by year



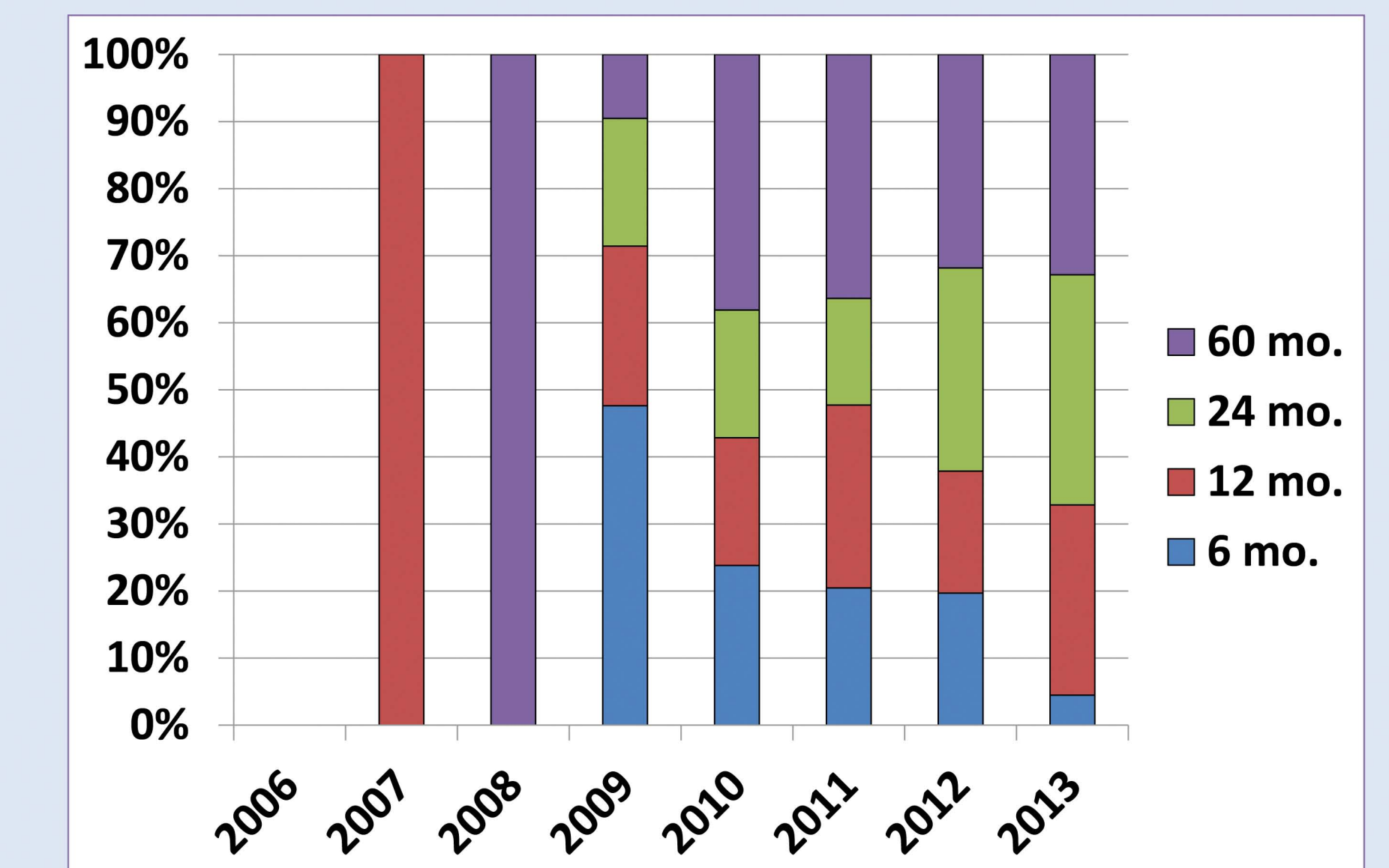
As % of submissions

2. Requested embargo periods are lengthening.

Embargo Period Selections



AU access only

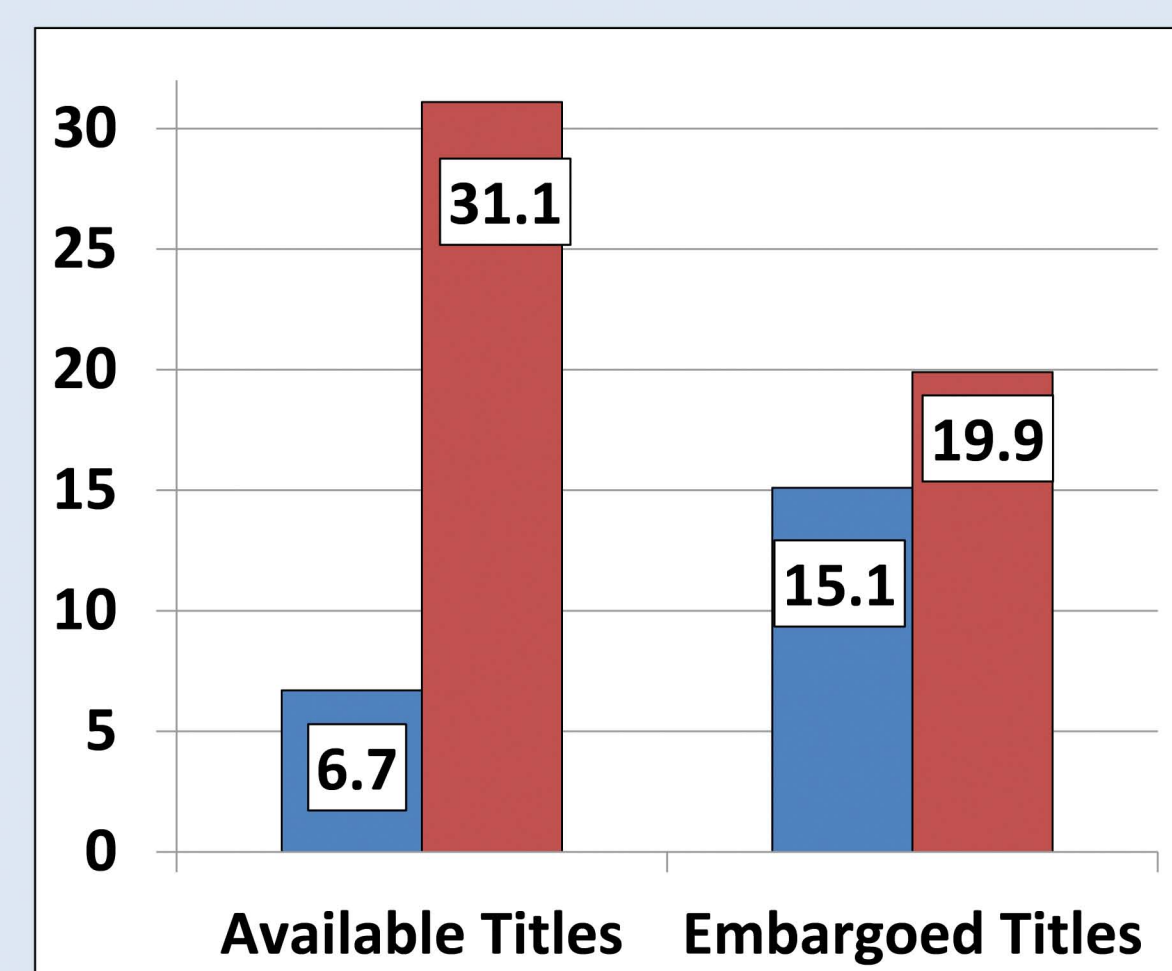


Global restriction

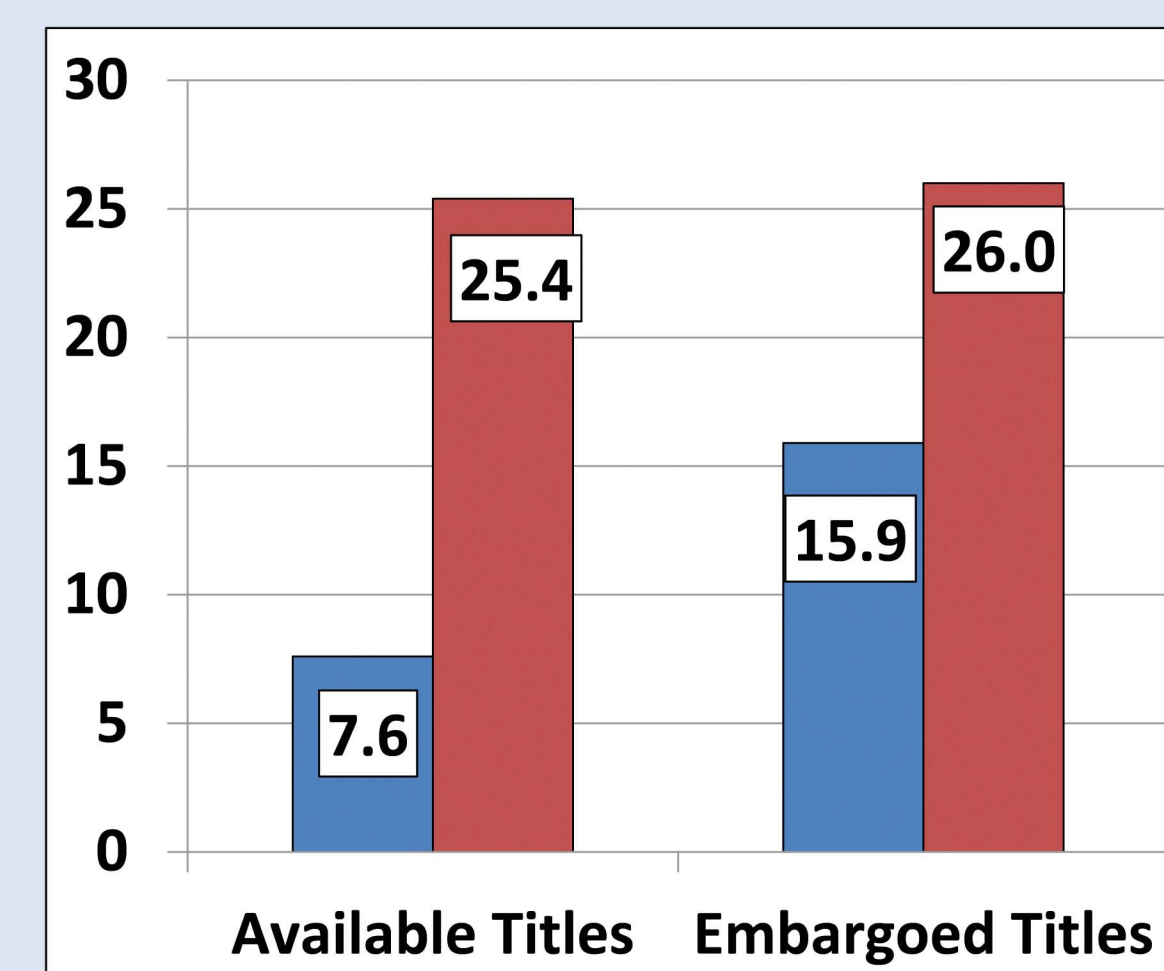
3. Over the last few years, interest in embargoed titles has been increasing vs. non-embargoed titles ...

Metadata Pages: Views/Title

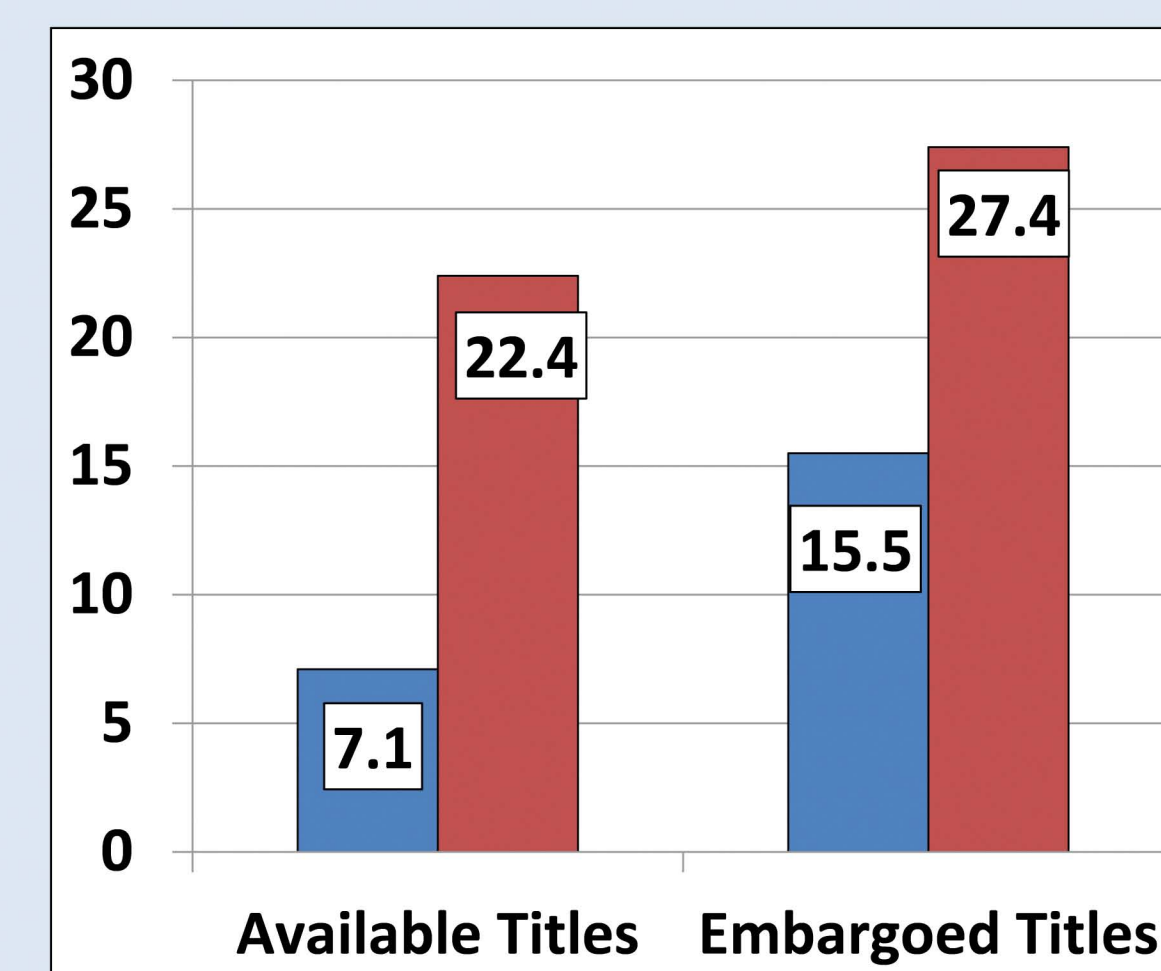
Local Users
NonLocal Users



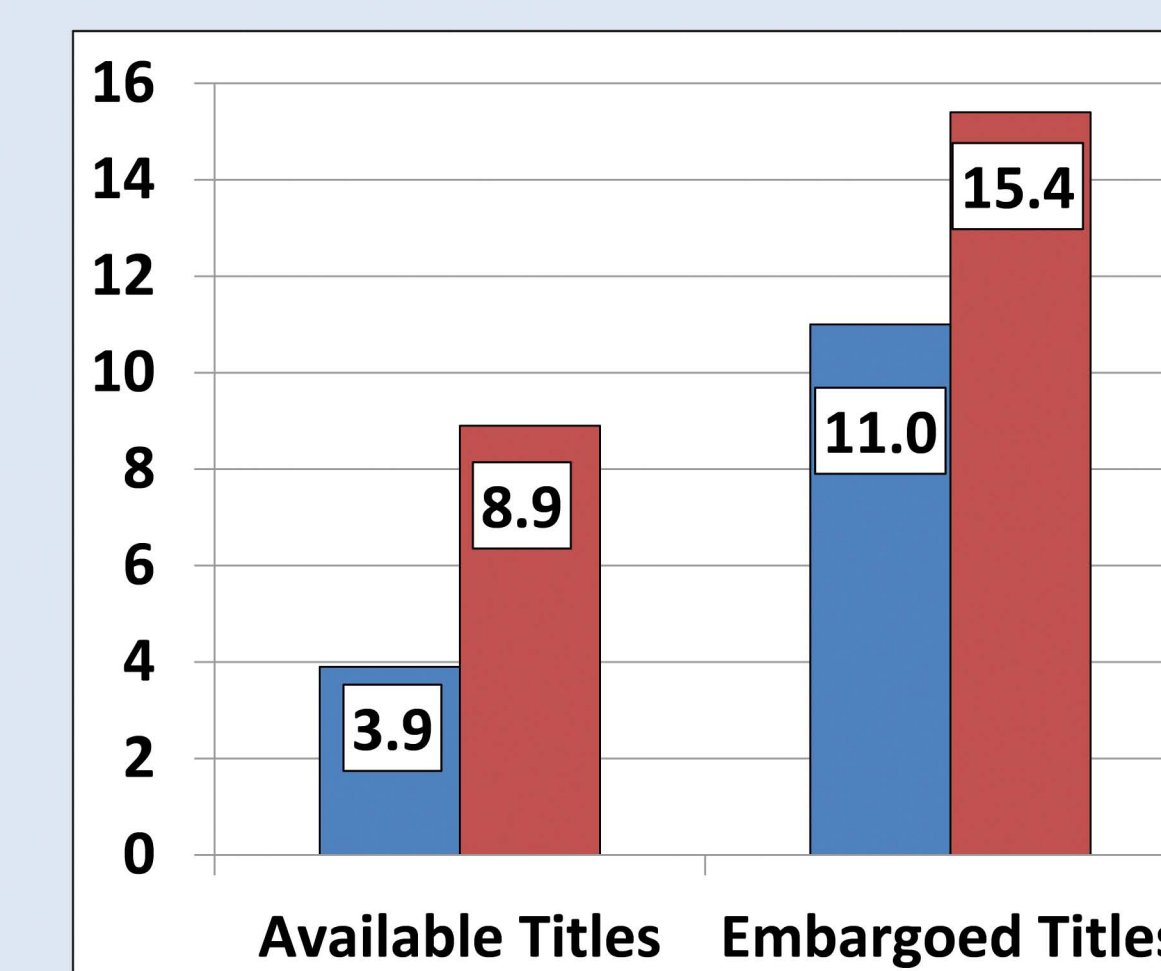
2011 Data



2012 Data

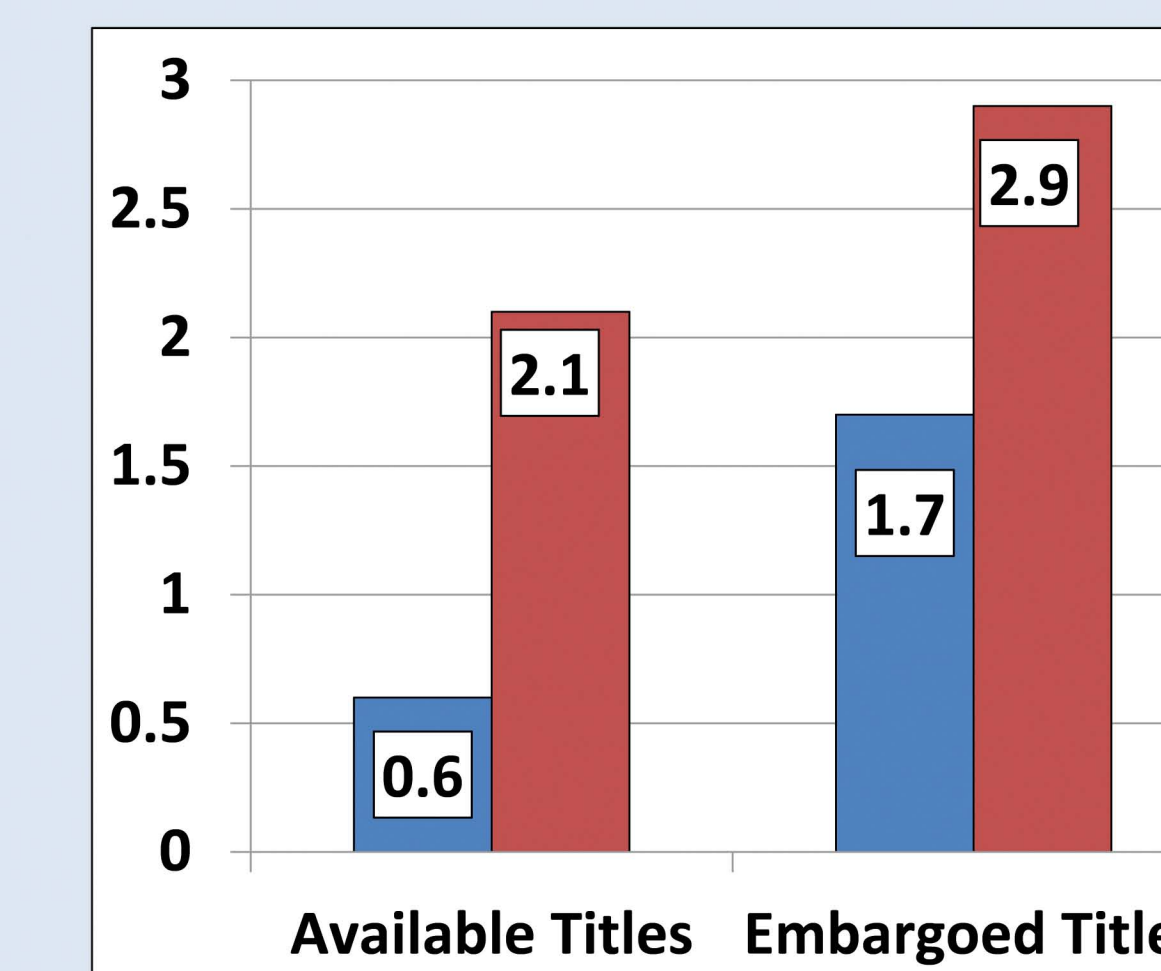


2013 Data



2014 Data

PDFs: Download Attempts/Title



2013 Data

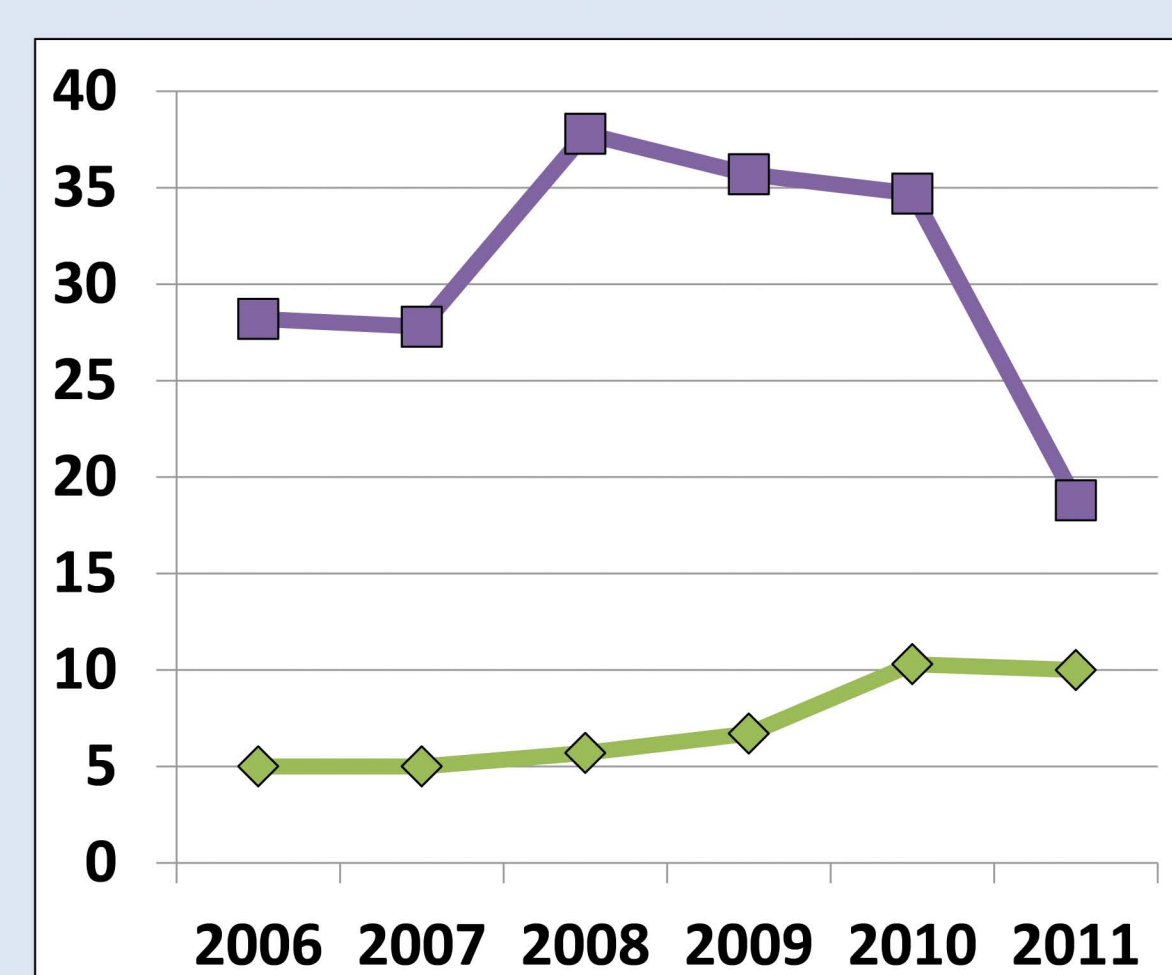


2014 Data

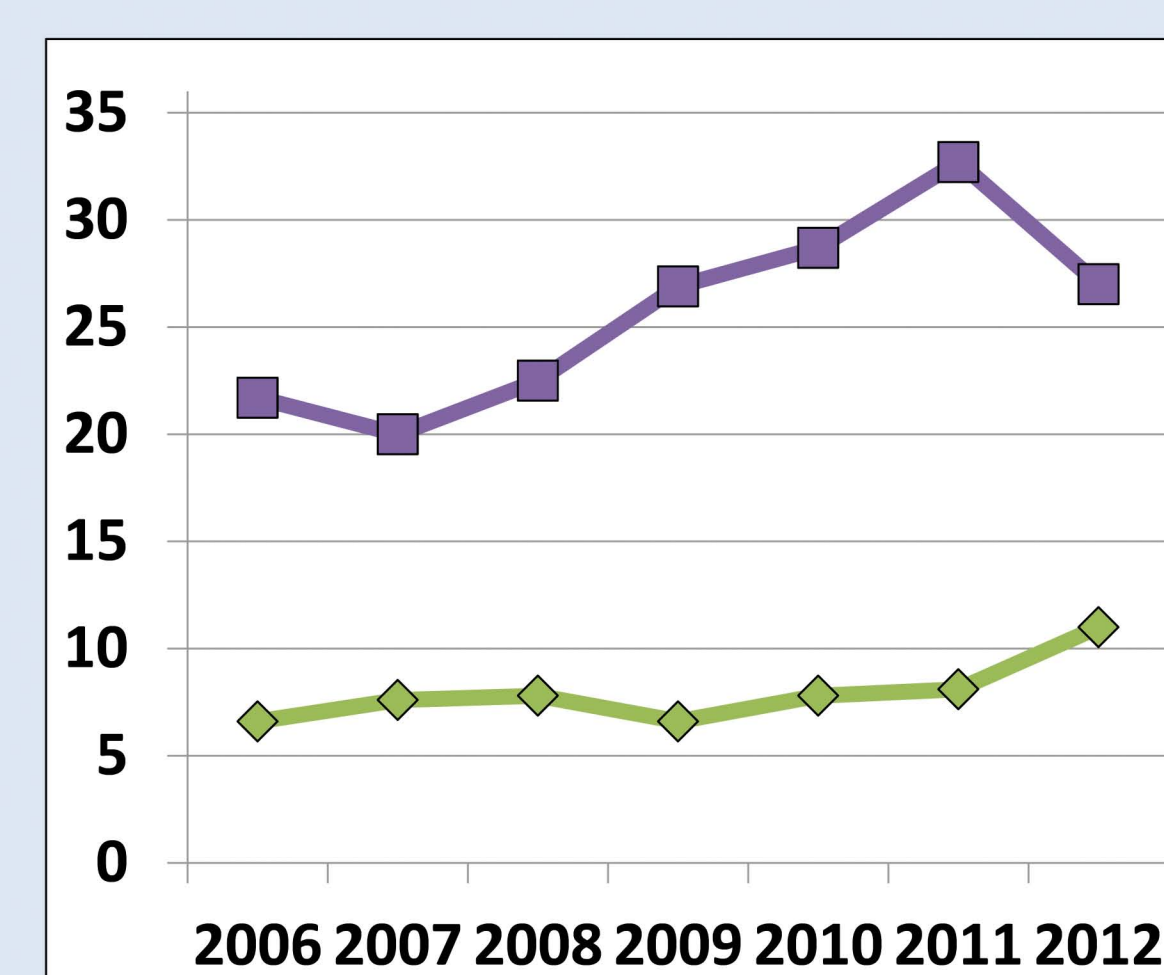
... But this may arise from increasing interest in more recent titles (more likely to be embargoed) vs. older titles.

Metadata Pages: Views/Title

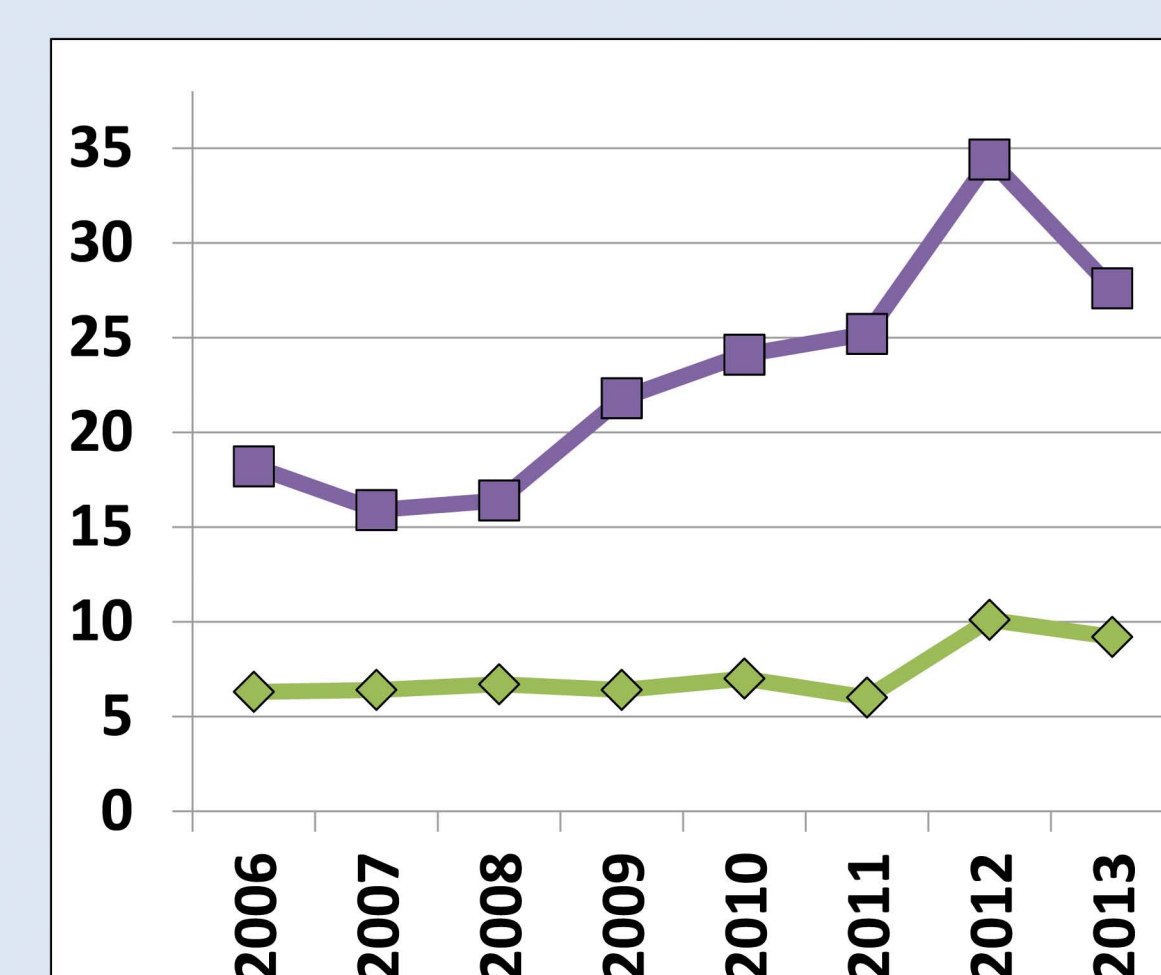
Local Users
NonLocal Users



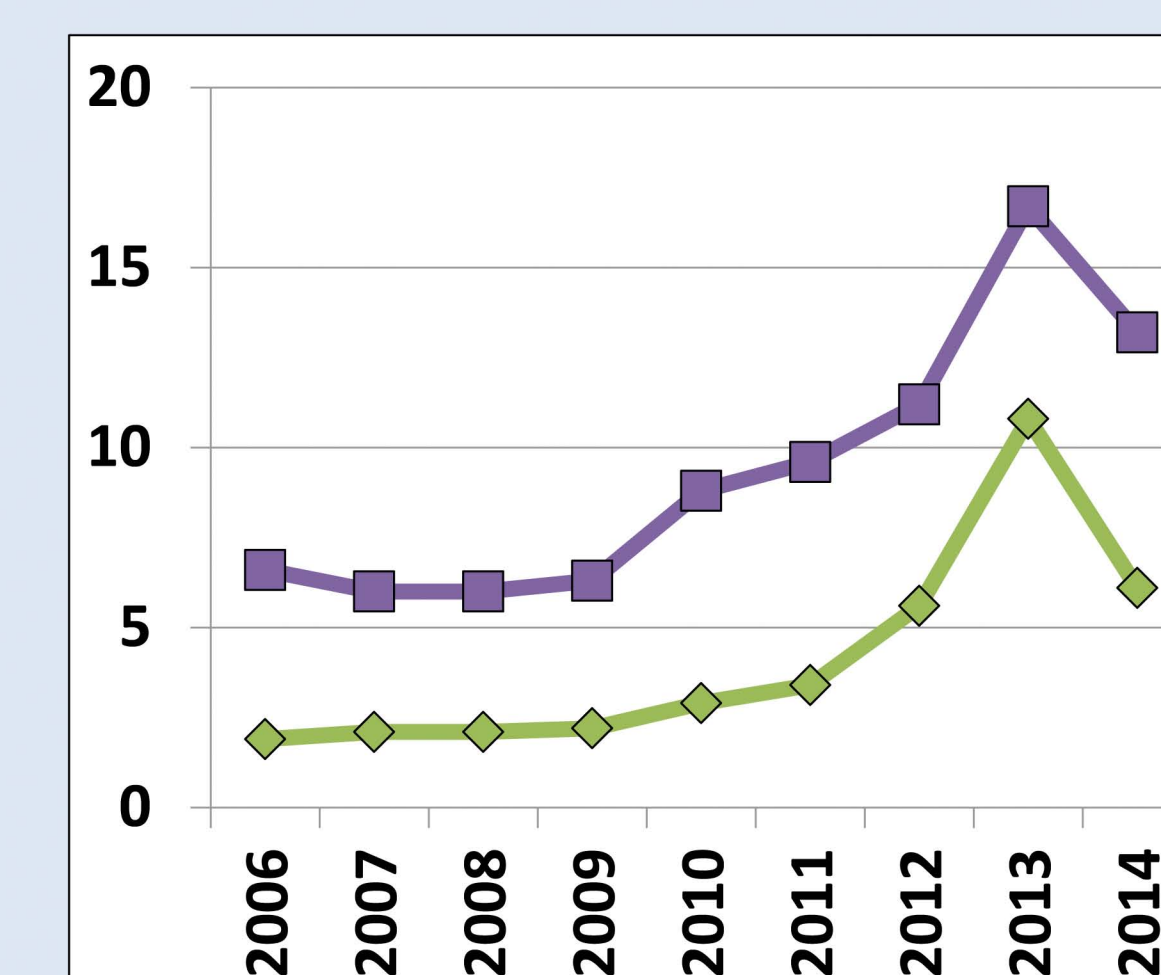
2011 Data



2012 Data

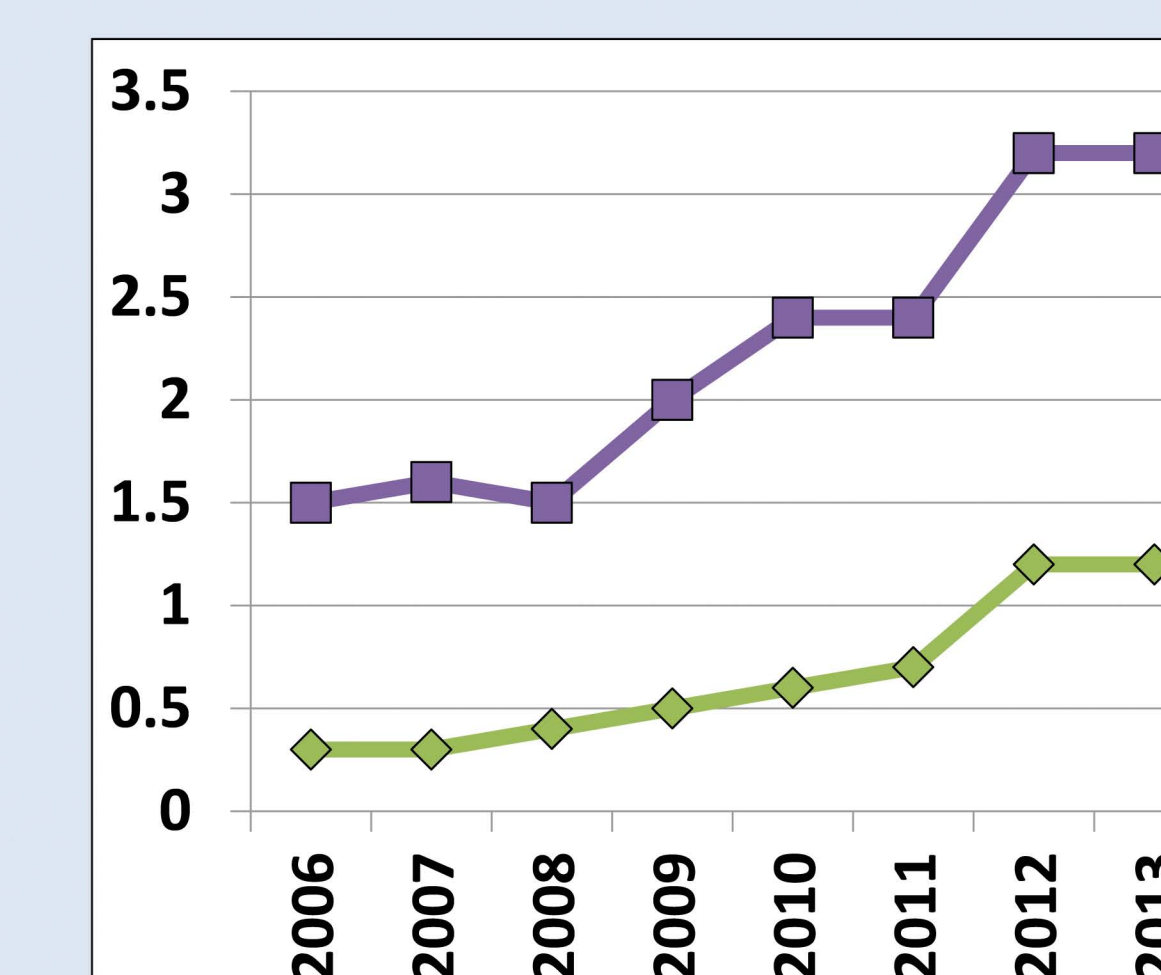


2013 Data

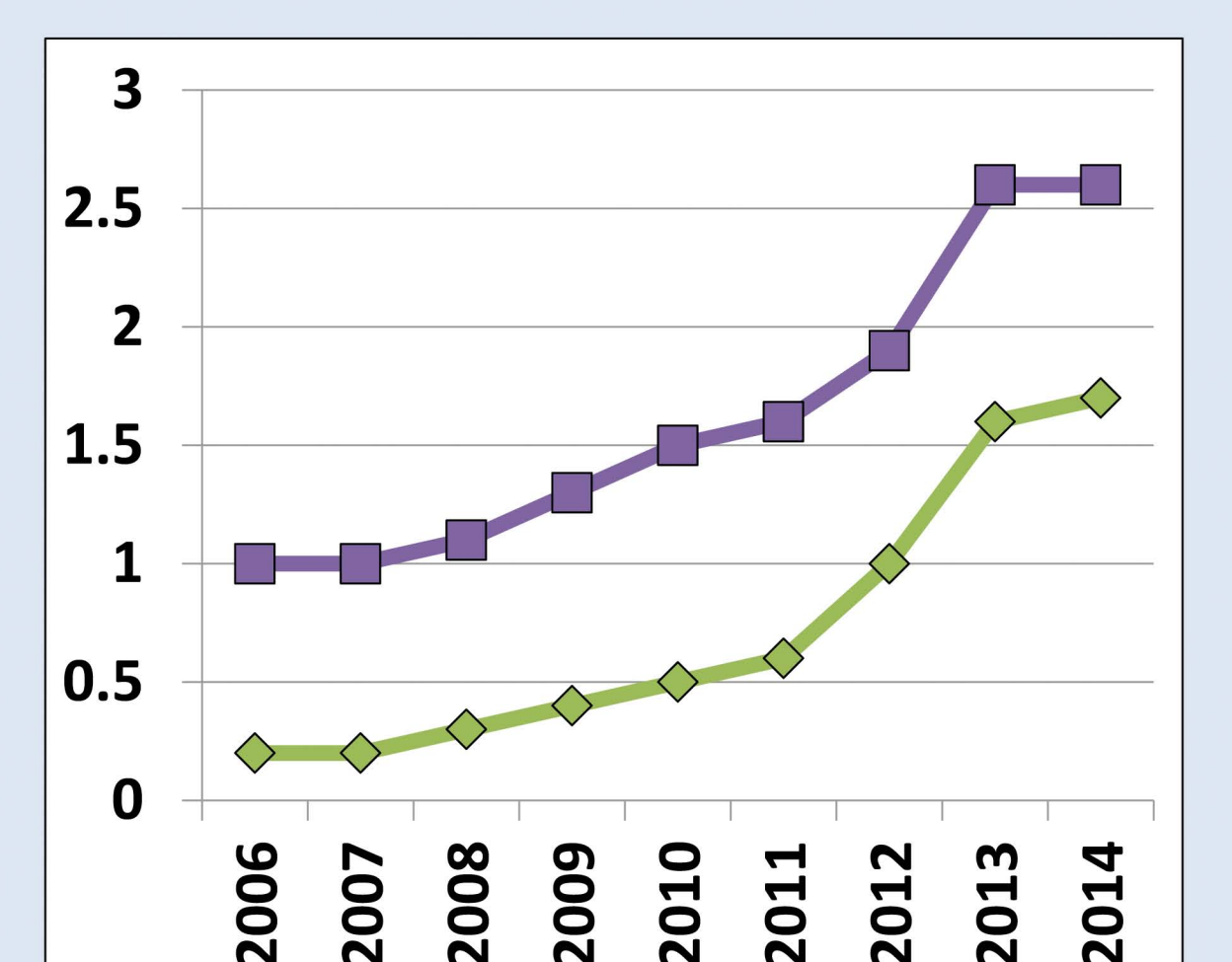


2014 Data

PDFs: Download Attempts/Title



2013 Data



2014 Data