
COTTON



AGRONOMY

2018 On-Farm Cotton Variety Trial Program

2018 On-Farm Cotton Variety Trial Team

Extension Specialists

Tyler Sandlin	Extension Specialist-Agronomic Crops
Dennis Delaney	Extension Specialist-Agronomic Crops
William Birdsong	Extension Specialist-Agronomic Crops
Tim Reed	Extension Specialist-Entomology
Ron Smith	Extension Specialist-Entomology

Regional Extension Agents

Eddie McGriff	Northeast Alabama
Rudy Yates	West Alabama
Kim Wilkins	Southwest Alabama
Brandon Dillard	Southeast Alabama
Christy Hicks	Central Alabama
Ricky Colquitt	Shelby County Coordinator

AAES Directors

Malcomb Pegues	Gulf Coast Research & Ext. Center— Director
Jarrod Jones	Gulf Coast Research & Ext. Center— Associate Director

Program Staff

Jon Brasher
Kathy Glass
Andy Page
Rhett Wilson

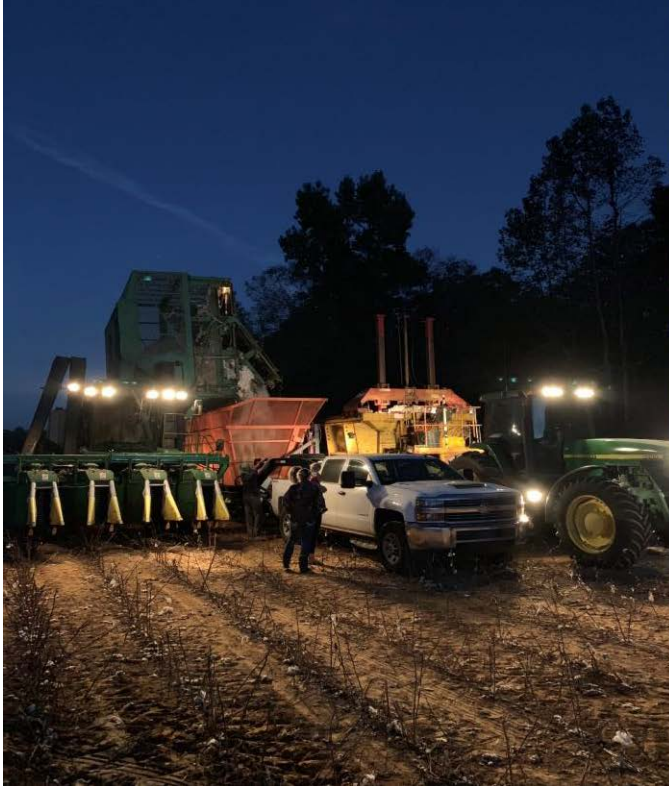


Table of Contents

Introduction	4
Methods	4
Acknowledgements.....	5
2018 On-Farm Cotton Variety Trial Results	6
Table 1. Cotton Lint Yield and Fiber Quality Means Across 7 On Farm Locations in North Alabama	6
Table 2. Cotton Lint Yield and Fiber Quality Means Across 6 On Farm Locations in South Alabama	7
Table 3. 2018 Cotton On-Farm Variety Trial – Blount County, Alabama.....	8
Table 4. 2018 Cotton On-Farm Variety Trial – Cherokee County, Alabama.....	9
Table 5. 2018 Cotton On-Farm Variety Trial – Cherokee County, Alabama.....	10
Table 6. 2018 Cotton On-Farm Variety Trial – Franklin County, Alabama.....	11
Table 7. 2018 Cotton On-Farm Variety Trial – Lawrence County, Alabama.....	12
Table 8. 2018 Cotton On-Farm Variety Trial – Lincoln County, Tennessee.....	13
Table 9. 2018 Cotton On-Farm Variety Trial – Shelby County, Alabama.....	14
Table 10. 2018 Cotton On-Farm Variety Trial – Baldwin County, Alabama.....	15
Table 11. 2018 Cotton On-Farm Variety Trial – Barbour County, Alabama.....	16
Table 12. 2018 Cotton On-Farm Variety Trial – Elmore County, Alabama.....	17
Table 13. 2018 Cotton On-Farm Variety Trial – Escambia County, Alabama.....	18
Table 14. 2018 Cotton On-Farm Variety Trial – Montgomery County, Alabama.....	19
Table 15. 2018 Cotton On-Farm Variety Trial – Tallapoosa County, Alabama.....	20



Introduction

Variety selection continues to be one of if not the most important decision growers will make with respect to cotton production. Alabama has several regions in which variety selection, production practices, and environments differ. Varietal performance and stability within regions and across the state are of the utmost importance. Auburn University and the Alabama Cooperative Extension System (ACES) Cotton Agronomy Program provide an unbiased review of on-farm cotton variety performance for multiple regions and environments in Alabama. The results from these on-farm trials are intended to aid cotton growers in determining suitable varieties for their operation.

Methods

Harvest season was a challenge for many producers in 2018 to say the least. Frequent weather events stretched harvest beyond December for some cotton producers. On-Farm cotton variety

tests were no different. A total of 17 on-farm variety tests were planted across the state with four being lost due to inclement weather. Different variety sets were planted for North and South Alabama with some varieties common to both sets. North Alabama locations consisted of Shelby County and north while South Alabama locations included Tallapoosa county and south. A total of 12 commercially available varieties were included for each set. The majority of locations consisted of two replications, while three large plot locations included three replications. Row lengths ranged from 800 to 3,000 feet for on-farm trials in 2018. Each on-farm test was harvested using standard equipment. Harvest weights were obtained by using either a calibrated boll buggy for trials harvest with basket pickers or a calibrated platform scale for trials harvested with round module pickers. In order to expedite results and obtain commercial quality turnouts, seed cotton samples were ginned at The University of Tennessee Cotton Micro Gin located at the West Tennessee Research and Education Center in Jackson, TN. HVI analysis was performed at the USDA cotton classing office in Memphis, TN.

Acknowledgements

Auburn University and the ACES Cotton Agronomy Program would like to express sincere appreciation to the cooperating growers for their participation in these trials. We would also like to express great appreciation to the Alabama Cotton Commission and Cotton Incorporated for support in these trials. Additionally, we would like to express our appreciation to the participating seed companies and representatives including: Americot/NexGen—Mr. Brad Littlefield and Mr. Chase Samples; BASF—Dr. Scott Asher and Dr. Andy White; Delta and Pine Land—Dr. T. Vint Hicks; Dow AgroSciences/Phytogen Cottonseed—Dr. Chris Main and Dr. Russell Nuti; Nutrien Ag Solutions—Mr. George Huckabay. Special thanks is also expressed to the UTIA Cotton Program for allowing joint participation in the Lincoln County, TN on farm trial.



2018 On-Farm Cotton Variety Trial Results

Table 1. Cotton Lint Yield and Fiber Quality Means Across 7 On Farm Locations in North Alabama.

VARIETY	Rank	Lint Yield (lbs/A)	Lint Turn-Out (%)	Micronaire	Length (in.)	Strength (g/tex)	Uniformity (%)
DP1646B2XF	1	1416	41.8%	4.4	1.22	30.7	82.6
DP1725B2XF	2	1336	42.0%	4.5	1.15	30.9	81.8
ST4949GLT	3	1278	41.9%	4.6	1.12	29.3	81.7
*PHY480W3FE	4	1269	38.8%	4.3	1.15	30.6	83.3
NG4601B2XF	5	1266	40.4%	4.7	1.17	31.7	83.2
NG3729B2XF	6	1265	38.6%	4.6	1.17	30.3	83.2
PHY430W3FE	7	1256	40.7%	4.3	1.12	31.3	83.0
DP1820B3XF	8	1249	41.4%	4.6	1.20	32.8	82.7
DG3385B2XF	9	1241	39.9%	4.6	1.15	29.1	83.3
ST5471GLTP	10	1239	39.3%	4.3	1.16	30.9	82.0
ST5122GLT	11	1220	38.9%	4.3	1.14	30.5	81.6
PHY330W3FE	12	1203	40.5%	4.4	1.17	31.6	83.6
AVERAGE:		1270	40.4%	4.5	1.16	30.8	82.7

*Variety planted at 6 locations.

Table 2. Cotton Lint Yield and Fiber Quality Means Across 6 On Farm Locations in South Alabama.

VARIETY	Rank	Lint Yield (lbs/A)	Lint Turn-Out (%)	Micronaire	Length (in.)	Strength (g/tex)	Uniformity (%)
PHY480W3FE	1	1178	36.5%	4.2	1.20	33.6	84.0
DP1646B2XF	2	1174	40.5%	4.1	1.22	30.5	81.8
ST5471GLTP	3	1174	39.0%	4.1	1.18	31.7	81.7
NG5007B2XF	4	1171	37.5%	4.1	1.18	32.4	82.4
DP1840B3XF	5	1157	39.2%	4.4	1.14	28.6	81.7
NG5711B3XF	6	1138	38.8%	4.2	1.18	30.6	82.5
PHY430W3FE	7	1123	39.2%	4.1	1.16	31.3	82.3
ST5818GLT	8	1101	39.6%	4.2	1.11	31.0	82.1
ST6182GLT	9	1058	39.2%	4.2	1.15	29.9	82.5
DP1851B3XF	10	1054	37.6%	4.1	1.14	30.5	81.4
PHY330W3FE	11	1034	37.7%	4.1	1.17	31.2	82.1
DG3445B2XF	12	1004	41.4%	4.3	1.13	29.0	81.2
AVERAGE:		1114	38.9%	4.2	1.16	30.9	82.1

Table 3. 2018 Cotton On-Farm Variety Trial – Blount County, Alabama.

2018 BLOUNT COUNTY COTTON ON-FARM VARIETY TRIAL

Cooperators: Jimmy and Lance Miller

Planted: 5/11/18

Harvested: 10/13/18

Row Spacing: 38"

Seeding rate: 41,000 seed/acre

Planting Method: No-Till

Environment: Dryland

Previous Crop: Cotton

Soil Type: Wynville Fine Sandy Loam

VARIETY	Rank	Lint Yield (lbs/A)	Lint Turn-Out (%)	Micronaire	Length (in.)	Strength (g/tex)	Uniformity (%)
DP1646B2XF	1	1653	41.0%	4.3	1.23	31.1	83.5
DP1820B3XF	2	1596	43.8%	4.3	1.21	33.6	83.7
DP1725B2XF	3	1568	41.4%	4.4	1.17	32.3	83.4
NG3729B2XF	4	1521	39.2%	4.4	1.17	30.5	83.9
ST4949TGLT	5	1510	42.3%	4.4	1.12	28.5	80.1
ST 5471 GLTP	6	1510	39.7%	4.0	1.12	29.3	80.6
NG4601B2XF	7	1501	40.2%	4.5	1.17	32.6	83.7
PHY330W3FE	8	1495	41.4%	4.0	1.16	33.2	83.5
PHY430W3FE	9	1416	40.1%	3.7	1.10	32.4	82.7
DG3385B2XF	10	1363	39.5%	4.1	1.12	31.0	81.4
ST5122GLT	11	1391	38.3%	4.5	1.15	29.6	83.8
PHY480W3FE	12	1237	38.2%	3.8	1.13	30.2	83.1
AVERAGE:		1480	40.4%	4.2	1.15	31.2	82.8

Table 4. 2018 Cotton On-Farm Variety Trial – Cherokee County, Alabama.

2018 CHEROKEE COUNTY COTTON ON-FARM VARIETY TRIAL

Cooperators: Nick & Randall McMichen

Planted: 5/9/18

Harvested: 10/30/18

Row spacing: 2x1 30" skip

Seeding Rate: 42,000 seed/acre

Planting Method: No-Till

Environment: Center Pivot

Previous Crop: Soybean

Soil Type: Holston Loam

VARIETY	Rank	Lint Yield (lbs/A)	Lint Turn-Out (%)	Micronaire	Length (in.)	Strength (g/tex)	Uniformity (%)
DP1646B2XF	1	1872	40.1%	4.7	1.23	29.3	82.1
DP1725B2XF	2	1789	41.3%	4.6	1.20	31.6	80.3
DG3385B2XF	3	1708	41.0%	4.6	1.17	29.7	84.2
NG4601B2XF	4	1686	40.7%	4.8	1.20	31.8	82.6
ST4949TGLT	5	1598	41.1%	4.5	1.14	29.0	81.8
PHY480W3FE	6	1597	37.7%	4.4	1.19	30.7	84.4
DP1820B3XF	7	1557	40.0%	4.9	1.25	31.0	83.0
PHY430W3FE	8	1555	38.6%	4.4	1.15	31.6	82.8
ST5471GLTP	9	1533	37.8%	4.4	1.19	30.3	81.3
NG3729B2XF	10	1498	38.2%	4.8	1.10	29.0	83.0
PHY330W3FE	11	1416	40.1%	4.5	1.19	30.0	82.2
ST5122GLT	12	1363	38.0%	4.7	1.18	29.9	82.1
AVERAGE:		1598	39.5%	4.6	1.18	30.3	82.5

Table 5. 2018 Cotton On-Farm Variety Trial – Cherokee County, Alabama.

2018 CHEROKEE COUNTY COTTON ON-FARM VARIETY TRIAL

Cooperators: Rich Lindsey/Coosa River Land Co.

Planted:5/3/18

Harvested: 11/29/18

Row Spacing: 36"

Seeding Rate: 39,000 seed/acre

Planting Method: No-Till

Environment: Dryland

Previous Crop: Cotton

Soil Type: McQueen Loam

VARIETY	Rank	Lint Yield (lbs/A)	Lint Turn-Out (%)	Micronaire	Length (in.)	Strength (g/tex)	Uniformity (%)
ST5122GLT	1	1464	38.0%	4.2	1.15	29.7	81.3
ST4949TGLT	2	1389	40.5%	4.5	1.12	29.8	82.7
NG3729B2XF	3	1337	39.6%	4.7	1.17	29.7	82.1
PHY480W3FE	4	1328	38.5%	4.4	1.17	29.4	83.7
DP1725B2XF	5	1290	39.6%	4.5	1.14	31.1	82.3
DP1646B2XF	6	1279	39.8%	4.3	1.22	30.0	82.1
DP1820B3XF	7	1279	41.5%	4.5	1.21	31.9	82.6
PHY430W3FE	8	1254	39.2%	4.3	1.13	28.9	82.8
ST5471GLTP	9	1236	37.6%	3.8	1.17	32.2	81.5
NG4601B2XF	10	1221	40.7%	4.6	1.18	31.1	83.9
PHY330W3FE	11	1205	38.2%	4.3	1.20	30.7	84.4
DG3385B2XF	12	1030	37.9%	4.6	1.15	28.7	82.9
AVERAGE:		1276	39.3%	4.4	1.17	30.3	82.7

Table 6. 2018 Cotton On-Farm Variety Trial – Franklin County, Alabama.

2018 FRANKLIN COUNTY COTTON ON-FARM VARIETY TRIAL

Cooperators: Thomas Murray

Planted: 5/12/18

Harvested: 10/12/18

Row spacing: 38"

Seeding rate: 40,000 seed/acre

Planting Method: No-Till

Environment: Dryland

Previous Crop: Corn

Soil Type: Decatur Silt Loam

VARIETY	Rank	Lint Yield (lbs/A)	Lint Turn-Out (%)	Micronaire	Length (in.)	Strength (g/tex)	Uniformity (%)
DP1646B2XF	1	1223	44.3%	4.1	1.27	31.2	83.2
DG3385B2XF	2	1121	40.5%	4.4	1.19	28.6	83.7
NG4601B2XF	3	1024	40.7%	4.8	1.16	32.5	82.7
DP1725B2XF	4	977	43.5%	4.4	1.14	30.9	82.1
ST4949TGLT	5	973	41.5%	4.7	1.12	29.2	81.0
ST5471 GLTP	6	972	39.2%	4.4	1.17	31.2	82.2
PHY480W3FE	7	963	39.3%	4.2	1.13	29.6	82.5
PHY430W3FE	8	962	41.5%	4.2	1.11	31.1	82.9
ST5122GLT	9	944	39.7%	3.8	1.15	30.6	81.4
NG3729B2XF	10	940	38.1%	4.3	1.17	31.2	83.6
PHY330W3FE	11	940	40.4%	4.0	1.15	31.8	83.0
DP1820B3XF	12	896	39.9%	4.4	1.19	33.7	82.7
AVERAGE:		995	40.7%	4.3	1.16	31.0	82.6

Table 7. 2018 Cotton On-Farm Variety Trial – Lawrence County, Alabama.

2018 LAWRENCE COUNTY COTTON ON-FARM VARIETY TRIAL

Cooperators: Martin Farm
 Planted: 5/3/18
 Harvested: 10/15/18
 Row Spacing: 30”
 Seeding Rate: 47,000 seed/acre
 Planting Method: No-Till
 Environment: Dryland
 Previous Crop: Corn
 Soil Type: Decatur Silty Clay Loam

VARIETY	Rank	Lint Yield (lbs/A)	Lint Turn-Out (%)	Micronaire	Length (in.)	Strength (g/tex)	Uniformity (%)
DG3385B2XF	1	1410	41.4%	4.6	1.15	30.3	83.0
DP1646B2XF	2	1393	42.6%	4.6	1.19	31.2	82.0
DP1725B2XF	3	1359	44.1%	4.5	1.14	30.4	81.2
NG3729B2XF	4	1326	40.0%	4.7	1.19	30.8	83.4
ST 5471GLTP	5	1324	40.3%	4.0	1.16	30.6	82.3
PHY430W3FE	6	1289	42.2%	4.4	1.11	32.0	82.9
NG4601B2XF	7	1287	41.3%	4.9	1.17	32.8	84.1
ST5122GLT	8	1264	40.5%	4.2	1.12	31.8	81.0
ST4949TGLT	9	1225	43.3%	4.6	1.11	29.4	81.4
DP1820B3XF	10	1224	42.8%	4.5	1.19	33.6	82.3
PHY330W3FE	11	1223	42.5%	4.7	1.15	31.8	82.8
PHY480W3FE	12	1170	39.6%	4.5	1.14	32.2	82.5
AVERAGE:		1291	41.7%	4.5	1.15	31.4	82.4

Table 8. 2018 Cotton On-Farm Variety Trial – Lincoln County, Tennessee.

2018 LINCOLN COUNTY COTTON ON-FARM VARIETY TRIAL

Cooperators: Jared & Tommy Bradley

Planted: 5/12/18

Harvested: 10/13/18

Row spacing: 30"

Seeding rate: 54,000 seed/acre

Planting Method: Minimum Till

Environment: Dryland

Previous Crop: Corn

Soil Type: Mountview Silt Loam

VARIETY	Rank	Lint Yield (lbs/A)	Lint Turn-Out (%)	Micronaire	Length (in.)	Strength (g/tex)	Uniformity (%)
DP1725B2XF	1	1160	42.8%	5.1	1.09	29.2	82
PHY330W3FE	2	1078	40.5%	5.1	1.14	31.7	84.4
DP1646B2XF	3	1072	41.7%	5.1	1.19	29.9	81.9
PHY430W3FE	4	1068	42.9%	5.2	1.08	29.9	82.1
DG3385B2XF	5	1059	40.6%	5.3	1.09	27.8	82.6
NG3729B2XF	6	1041	39.0%	5.2	1.17	30.5	83.7
ST5122GLT	7	1016	39.4%	5.0	1.11	29.8	81.3
NG4601B2XF	8	992	41.3%	5.6	1.12	30.7	83
DP1820B3XF	9	985	40.5%	5.2	1.12	32.0	82.5
ST4949GLT	10	954	43.0%	5.2	1.07	28.0	81.7
ST5471GLTP	11	943	39.8%	5.1	1.10	30.4	81
AVERAGE:		1033	41.1%	5.1	1.10	30.4	81

Table 9. 2018 Cotton On-Farm Variety Trial – Shelby County, Alabama.

2018 SHELBY COUNTY COTTON ON-FARM VARIETY TRIAL

Cooperators: Phillip Barber
 Planted: 5/8/18
 Harvested: 10/12/18
 Row Spacing: 38"
 Seeding Rate: 46,000 seed/acre
 Planting Method: No-Till
 Environment: Water Wheel Irrigation
 Previous Crop: Cotton
 Soil type: Allen Loam

VARIETY	Rank	Lint Yield (lbs/A)	Lint Turn-Out (%)	Micronaire	Length (in.)	Strength (g/tex)	Uniformity (%)
DP1646B2XF	1	1420	43.3%	4.0	1.23	31.9	83.7
PHY480W3FE	2	1322	39.7%	4.2	1.16	31.5	83.4
ST4949TGLT	3	1298	41.7%	4.1	1.15	31.3	83.2
PHY430W3FE	4	1250	40.3%	4.2	1.16	33.2	84.8
DP1725B2XF	5	1212	41.6%	4.2	1.16	31.0	81.1
DP1820B2XF	6	1205	41.2%	4.5	1.20	33.7	82.2
NG3729B2XF	7	1195	36.3%	4.4	1.21	30.1	82.9
ST5471GLTP	8	1153	40.6%	4.6	1.18	32.5	85.0
NG4601B2XF	9	1149	37.9%	3.8	1.17	30.6	82.2
ST5122GLT	10	1097	38.5%	3.9	1.16	30.5	82.5
PHY330W3FE	11	1064	40.1%	4.2	1.18	32.0	84.8
DG3385B2XF	12	992	38.7%	4.4	1.13	29.2	83.0
AVERAGE:		1197	40.0%	4.2	1.17	31.5	83.2

Table 10. 2018 Cotton On-Farm Variety Trial – Baldwin County, Alabama.

2018 BALDWIN COUNTY COTTON ON-FARM VARIETY TRIAL

Cooperators: Gulf Coast Research & Ext. Center

Planted: 5/22/18

Harvested: 10/29/18

Row Spacing: 38"

Seeding Rate: 30,000 seed/acre

Planting Method: No-Till-Grazed Small Grain

Environment: Dryland

Previous Crop: Cotton

Soil Type: Marlboro Fine Sandy Loam

VARIETY	Rank	Lint Yield (lbs/A)	Lint Turn-Out (%)	Micronaire	Length (in.)	Strength (g/tex)	Uniformity (%)
ST5471GLTP	1	1039	37.3%	4.1	1.15	29.1	81.5
PHY430W3FE	2	904	38.2%	4.0	1.10	29.3	80.2
DP1646B2XF	3	903	38.2%	3.5	1.22	31.0	81.1
ST5818GLT	4	878	37.2%	3.6	1.23	31.9	82.7
DP1840B3XF	5	871	36.4%	3.6	1.19	30.5	81.4
NG5007B2XF	6	859	35.5%	4.3	1.16	30.1	81.6
NG5711B3XF	7	846	37.6%	4.0	1.13	29.8	82.0
DP1851B3XF	8	814	35.1%	3.8	1.14	31.6	81.1
PHY330W3FE	9	799	36.5%	4.1	1.16	30.0	79.8
ST6182GLT	10	798	36.1%	4.2	1.13	28.8	81.1
PHY480W3FE	11	786	36.7%	4.1	1.13	29.2	81.5
DG3445B2XF	12	731	38.1%	3.9	1.19	31.0	80.7
AVERAGE:		852	36.9%	3.9	1.16	30.2	81.2

Table 11. 2018 Cotton On-Farm Variety Trial – Barbour County, Alabama.

2018 BARBOUR COUNTY COTTON ON-FARM VARIETY TRIAL

Cooperators: Likatchka Plantation

Planted: 5/2/18

Harvested: 11/8/18

Row spacing: 38"

Seeding rate: 29,500 seed/acre

Planting Method: Strip Till-Grazed Small Grain

Environment: Center Pivot

Previous Crop: Cotton

Soil Type: Fuquay Loam Sand

VARIETY	Rank	Lint Yield (lbs/A)	Lint Turn-Out (%)	Micronaire	Length (in.)	Strength (g/tex)	Uniformity (%)
NG5007B2XF	1	1562	37.9%	3.9	1.16	30.9	81.3
ST5471GLTP	2	1535	36.7%	4.0	1.12	31.4	82.6
PHY480W3FE	3	1525	39.0%	3.8	1.17	31.3	83.6
NG5711B3XF	4	1492	38.5%	4.2	1.14	28.3	82.9
DP1840B3XF	5	1476	36.8%	3.6	1.14	33.2	81.9
DP1646B2XF	6	1469	40.2%	3.9	1.22	30.5	81.4
ST5818GLT	7	1463	36.8%	4.1	1.16	31.4	82.6
PHY330W3FE	8	1460	39.1%	3.9	1.14	31.0	82.5
PHY430W3FE	9	1445	39.7%	4.2	1.10	31.0	81.9
DP1851B3XF	10	1396	37.1%	4.1	1.19	29.3	81.4
DG3445B2XF	11	1367	33.6%	3.9	1.20	34.0	86.2
ST6182GLT	12	1365	41.5%	4.2	1.14	29.4	81.7
AVERAGE:		1463	38.1%	4.0	1.16	31.0	82.5

Table 12. 2018 Cotton On-Farm Variety Trial – Elmore County, Alabama.

2018 ELMORE COUNTY COTTON ON-FARM VARIETY TRIAL

Cooperators: Taylor Farms
 Planted: 5/1/18
 Harvested: 10/16/18
 Row spacing: 38"
 Seeding rate: 37,000 seed/acre
 Planting Method: No-Till
 Environment: Dryland
 Previous Crop: Cotton
 Soil Type: Kalmia Sandy Loam

VARIETY	Rank	Lint Yield (lbs/A)	Lint Turn-Out (%)	Micronaire	Length (in.)	Strength (g/tex)	Uniformity (%)
DP1646B2XF	1	1231	42.4%	4.8	1.22	30.7	82.1
PHY480W3FE	2	1125	40.3%	4.7	1.14	30.1	83.3
DP1851B3XF	3	1096	41.3%	4.7	1.15	33.1	83.4
PHY430W3FE	4	1082	42.5%	4.9	1.11	31.4	83.5
DP1840B3XF	5	1077	41.8%	4.9	1.19	32.2	83.5
ST5818GLT	6	1063	38.9%	4.6	1.15	29.6	81.8
PHY330W3FE	7	1059	42.4%	4.7	1.15	31.7	83.7
NG5711B3XF	8	1015	38.7%	4.8	1.21	31.4	82.9
ST5471GLTP	9	1012	38.9%	4.8	1.12	30.4	81.4
NG5007B2XF	10	1003	41.3%	4.7	1.12	27.8	82.0
DG3445B2XF	11	950	38.3%	4.9	1.20	35.4	85.6
ST6182GLT	12	880	43.9%	4.8	1.12	28.9	82.0
AVERAGE:		1049	40.9	4.8	1.16	31.1	82.9

Table 13. 2018 Cotton On-Farm Variety Trial – Escambia County, Alabama.

2018 ESCAMBIA COUNTY COTTON ON-FARM VARIETY TRIAL

Cooperators: Kevin Holland and David Womack

Planted: 6/2/18

Harvested: 12/4/18

Row spacing: 38"

Seeding rate: 29,000 seed/acre

Planting Method: No-Till

Environment: Center Pivot

Previous Crop: Peanuts

Soil Type: Greenville Fine Sandy Loam

VARIETY	Rank	Lint Yield (lbs/A)	Lint Turn-Out (%)	Micronaire	Length (in.)	Strength (g/tex)	Uniformity (%)
ST5471GLTP	1	1100	38.5%	4.2	1.15	30.7	81.8
NG5007B2XF	2	943	38.9%	4.5	1.15	27.7	82.6
PHY330W3FE	3	888	38.5%	4.0	1.15	31.2	82.9
DP1840B3XF	4	810	38.6%	4.3	1.19	31.7	80.8
DP1646B2XF	5	772	39.6%	4.3	1.20	29.1	81.7
PHY480W3FE	6	745	39.8%	4.1	1.16	27.3	79.8
DP1851B3XF	7	733	36.7%	4.0	1.20	32.2	82.7
ST5818GLT	8	732	37.1%	4.1	1.17	30.5	82.8
ST6182GLT	9	730	40.7%	4.2	1.13	27.6	81.0
NG5711B3XF	10	702	36.5%	4.0	1.21	30.4	82.8
DG3445B2XF	11	686	34.9%	3.8	1.19	33.9	84.1
PHY430W3FE	12	659	37.7%	4.0	1.11	30.8	81.6
AVERAGE:		792	38.1%	4.0	1.17	30.3	82.0

Table 14. 2018 Cotton On-Farm Variety Trial – Montgomery County, Alabama.

2018 MONTGOMERY COUNTY COTTON ON-FARM VARIETY TRIAL

Cooperators: Mark Canon
 Planted: 6/6/18
 Harvested: 11/29/18
 Row spacing: 38"
 Seeding rate: 41,500 seed/acre
 Planting Method: Conventional
 Environment: Dryland
 Previous Crop: Cotton
 Soil Type: Houston Clay

VARIETY	Rank	Lint Yield (lbs/A)	Lint Turn-Out (%)	Micronaire	Length (in.)	Strength (g/tex)	Uniformity (%)
PHY480W3FE	1	1196	39.2%	4.0	1.14	30.7	83.2
NG5007B2XF	2	1158	42.5%	4.3	1.12	27.4	80.8
PHY430W3FE	3	1085	39.9%	3.8	1.10	31.6	82.4
DP1840B3XF	4	1061	41.1%	4.1	1.19	32.0	81.2
ST5471GLTP	5	1042	38.3%	3.4	1.14	30.5	79.3
NG5711B3XF	6	1004	41.0%	4.0	1.17	32.0	82.2
ST6182GLT	7	994	42.9%	4.0	1.11	29.4	80.5
DG3445B2XF	8	974	36.0%	4.0	1.18	33.8	83.4
DP1646B2XF	9	964	40.4%	3.8	1.21	30.2	81.6
ST5818GLT	10	949	38.8%	3.7	1.16	31.9	80.9
PHY330W3FE	11	791	38.7%	3.7	1.16	31.4	82.3
DP1851B3XF	12	777	36.3%	3.8	1.18	34.7	83.3
AVERAGE:		1000	39.6%	3.9	1.16	31.3	81.8

Table 15. 2018 Cotton On-Farm Variety Trial – Tallapoosa County, Alabama.

2018 TALLAPOOSA COUNTY COTTON ON-FARM VARIETY TRIAL

Cooperators: Wisner Farms
 Planted: 5/5/18
 Harvested: 10/19/18
 Row spacing: 38"
 Seeding rate: 41,300 seed/acre
 Planting Method: Strip Till
 Environment: Irrigated
 Previous Crop: Corn
 Soil Type: Wickham Sandy Loam

VARIETY	Rank	Lint Yield (lbs/A)	Lint Turn-Out (%)	Micronaire	Length (in.)	Strength (g/tex)	Uniformity (%)
NG5711B3XF	1	1770	40.5%	4.2	1.20	31.6	81.9
DP1646B2XF	2	1708	42.0%	4.3	1.22	31.6	83.1
PHY480W3FE	3	1688	40.5%	4.4	1.17	31.0	83.3
DP1840B3XF	4	1649	39.0%	4.3	1.19	30.8	81.2
ST6182GLT	5	1582	43.4%	4.2	1.13	29.8	81.0
PHY430W3FE	6	1565	39.9%	4.0	1.15	31.6	83.0
ST5818GLT	7	1520	37.5%	4.2	1.15	31.8	81.9
DP1851B3XF	8	1506	38.7%	4.1	1.19	33.7	82.5
NG5007B2XF	9	1501	39.5%	4.4	1.15	27.9	82.0
ST5471GLTP	10	1318	36.0%	4.2	1.18	30.7	81.8
DG3445B2XF	11	1312	38.2%	4.6	1.21	33.2	84.0
PHY330W3FE	12	1207	40.0%	3.9	1.19	32.3	82.7
AVERAGE:		1527	39.6%	4.2	1.18	31.3	82.4

