

1977
Alabama
Grain Sorghum
Performance
Tests

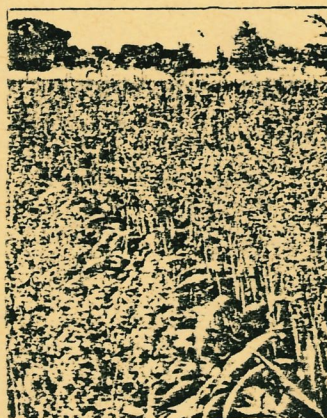
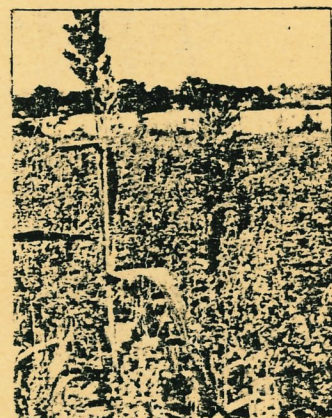


TABLE OF CONTENTS

| | Page |
|--|-------|
| Introduction | 5 |
| Locations and Cultural Practices (Table 1) | 9 |
| Upper Coastal Plain Substation, Winfield (Tables 2-6). | 10-16 |
| Prattville Experiment Field, Prattville (Tables 7-9) | 17-20 |
| Powell Farm, Prattville (Table 10) | 21-22 |
| Black Belt Substation, Marion Junction (Tables 11-12). | 23-25 |
| Lower Coastal Plain Substation, Camden (Tables 13-15). | 26-29 |
| Monroeville Experiment Field, Monroeville (Tables 16-18) | 30-33 |
| Wiregrass Substation, Headland (Tables 19-21). | 34-37 |
| Gulf Coast Substation, Fairhope (Table 22) | 38-39 |
| Sources of Seed. | 40-41 |

*Information contained
herein is available to
all regardless of race,
color, or national origin.*

1977 Grain Sorghum Performance Tests

Emmett L. Carden and Cliff Currier^{1/}

Grain sorghum performance tests are conducted annually at several locations throughout Alabama by Auburn University Agricultural Experiment Station. These tests give a relative comparison of performance of hybrids under the conditions at a particular location.

In 1977, nine tests were planted at seven locations. Severe drouth and insect damage resulted in reduced yields at most locations. The late-planted test at Prattville and the regular test at Marion Junction were severely damaged and were not harvested. The late-planted test at Winfield was not protected from birds and bird damage was so great that data from that test were not used in this report. In the absence of 1977 results, data from 1975 and 1976 for these three tests have been added as supplemental information.

The performance of hybrids varies with location. Therefore, this report should be carefully studied before a hybrid is selected.

Experimental Procedures

Cultural practices were uniform for all hybrids within a give test. The experimental design for all tests was a randomized complete block with four replications. Locations of the tests, plot sizes, and cultural practices are listed in Table 1. Sources of seed used in the tests are listed on pages 40-41.

Data

Yield *-No 3 year average Fairhope*

Yields are given in bushels per acre, calculated at 56 pounds per bushel. Samples were stored under uniform conditions for several weeks

^{1/}Formerly Research Associate, Department of Agronomy and Soils, presently Superintendent, Gulf Coast Substation; and Research Assistant, Department of Agronomy and Soils, respectively.

before weights were determined, and it was assumed that grain moisture was uniform for a location. Therefore, adjustment for moisture was not made.

With the exception of Headland, bird damage was excessive, and yields were calculated from 10 heads per plot which had been selected at random and protected from bird damage by covering with perforated paper bags soon after blooming. Plot yields were calculated by multiplying the average weight of grain per head obtained from the 10 bagged heads times the number of heads per plot. At Headland, bird damage was nominal and yields were calculated from the grain obtained from whole plots. All samples were threshed on a stationary plot thresher and cleaned prior to weighing.

Lodging

Lodging is given as the percent of plants broken or leaning at an angle of more than 45 degrees. The seedheads of many lodged plants would probably be missed by a combine. However, they are included in the yields in this report.

Plant Height

Plant height, in feet, was measured from the soil at the base of the plant to the tip of the head. Height can affect harvest efficiency; however, most of the sorghums tested are medium in height and are acceptable in this respect.

Head Exsertion

Head exsertion was measured from the collar of the terminal or flag leaf to the base of the head. Poor head exsertion may result in excessive green plant material in the harvested grain, as well as damage to the lower part of the head resulting from water accumulating in the terminal leaf.

Head type

Open or loose heads may be important in the humid Southeast. Open heads allow better air movement and faster drying after rains or dew. This may be helpful in reducing damage from insects and diseases which attack the heads. A rating of one for tight heads and three for open heads was used at all locations.

Mid-bloom

One measure of relative maturity is the mid-bloom date. This is the date when approximately one-half of the main heads in a plot are in bloom. Date of mid-bloom is shown for entries at several locations in tables 4, 13, and 17.

Selecting a Hybrid

The performance of hybrids varies among years and locations. Small yield differences between hybrids may be the result of slight differences in soil fertility and other factors. Also, some variation may be due to the relatively small samples obtained from the 10-head sampling method described above. For these reasons a review of data from several years of testing at the location most similar to yours is the most reliable method for selecting a hybrid.

ACKNOWLEDGMENT

These performance trials were conducted in cooperation with the following substation superintendents whose help is gratefully acknowledged: L. A. Smith, Black Belt; J. A. Little, Lower Coastal Plain; R. A. Moore, Upper Coastal Plain; W. E. Brown, Monroeville Field; F. T. Glaze, Prattville Field, J. G. Starling, Wiregrass, and J. E. Barrett, Gulf Coast. Appreciation is expressed to Mr. James Powell who provided space for a late-planted test on his farm near Prattville. A special thanks is expressed

to W. H. Hearn and Mrs. Sally Bagwell for the processing of data in
this report.

Table 1. Test Locations and Cultural Practices for 1977 and 1978 Sorghum Tests

Table 1 . Test Locations and Cultural Practices for 1977 Grain Sorghum Tests

| | Lower Coastal Plain (Camden) | Upper Coastal Plain (Winfield) | Prattville Field (Prattville) | Monroeville Field (Monroeville) | Wiregrass (Headland) | Gulf Coast (Fairhope) |
|--------------------------|------------------------------|--------------------------------|-------------------------------|---------------------------------|----------------------|-----------------------|
| Planting date: | 5-11 | 5-2 | 6-6 | 5-25 | 5-24 | 5-30 |
| Plot size: ^{1/} | | | | | | |
| Row number | 2 | 2 | 2 | 2 | 2 | 2 |
| Row width (in.) | 36 | 40 | 38 | 36 | 36 | 38 |
| Row length (ft.) | 20 | 20 | 20 | 20 | 18 | 20 |
| Replications (No.) | 4 | 4 | 4 | 4 | 4 | 4 |
| Nitrogen rate (lb. N/A) | 120 | 100 | 100 | 120 | 130 | 70 |
| Herbicide: | | | | | | |
| Kind | None | None | None | Atrazine | Atrazine | None |
| Rate (lb A.I./A) | - | - | - | 2.0 | 2.5 | - |
| Method | - | - | - | Broadcast | Broadcast | - |

^{1/} Seeding rate for all locations was eight seeds per foot of row.

Table 2. Yield and Other Characteristics of Grain Sorghum Hybrids Tested Three Years at the Upper Coastal Plain Substation, Winfield, 1975-77

| Brand name | Hybrid | Yield Bu/A | Lodging Pct. | Height Ft. | Head exsertion ¹ / In. | Head type ² / Rating |
|------------|-------------------|---------------|-----------------|---------------|---|---------------------------------------|
| Funk's | -----G-516BR | 56.5 | 1 | 3.2 | 7.6 | 3.0 |
| Pennington | -----Penngrain BR | 54.9 | 1 | 3.3 | 6.9 | 3.0 |
| Pioneer | -----B815 | 51.7 | 0 | 3.9 | 7.6 | 2.2 |
| Funk's | -----G-522 | 51.3 | 0 | 3.1 | 7.0 | 2.6 |
| McNair | -----650 | 51.3 | 0 | 3.1 | 7.8 | 2.6 |
| Warner | -----W-832 | 51.3 | 0 | 3.4 | 7.5 | 2.0 |
| Surgro | -----ORO | 48.5 | 0 | 3.0 | 6.0 | 2.4 |
| Surgro | -----ORO T | 43.9 | 3 | 3.6 | 7.7 | 2.3 |

¹/Measured from terminal leaf to base of the head.

²/1=tight; 2=medium; 3=loose.

Table 3. Yield and Other Characteristics of Grain Sorghum Hybrids Tested Two Years at the Upper Coastal Plain Substation, Winfield, 1976-77

| Brand name | Hybrid | Yield Bu/A | Lodging Pct. | Height Ft. | Head exsertion ^{1/} In. | Head type ^{2/} Rating |
|------------|--------------|---------------|-----------------|---------------|--|--------------------------------------|
| Growers | GSA 1334 BR | 67.9 | 1 | 3.4 | 7.9 | 3.0 |
| Growers | GSA 1180 | 64.0 | 0 | 3.2 | 8.5 | 2.0 |
| Funk's | G-516BR | 63.1 | 1 | 3.3 | 8.6 | 3.0 |
| Pioneer | B815 | 60.1 | 0 | 3.9 | 9.0 | 2.1 |
| Pennington | Penngrain BR | 59.9 | 1 | 3.2 | 8.0 | 3.0 |
| McNair | 650 | 58.6 | 1 | 3.1 | 8.8 | 2.6 |
| Warner | W-744 | 58.6 | 0 | 3.2 | 8.8 | 3.0 |
| Funk's | G-522 | 58.4 | 0 | 3.1 | 8.1 | 2.5 |
| Asgrow | Bug Off | 56.3 | 0 | 3.1 | 7.9 | 2.4 |
| Warner | W-832 | 55.8 | 0 | 3.4 | 8.4 | 2.0 |
| Grower | ML 135 | 53.8 | 1 | 3.0 | 8.1 | 2.5 |
| Surgro | ORO | 52.9 | 0 | 3.0 | 7.1 | 2.4 |
| Surgro | ORO T | 51.8 | 5 | 3.8 | 8.4 | 2.4 |
| Asgrow | Capitan | 44.0 | 0 | 3.1 | 9.0 | 2.1 |

^{1/}Measured from terminal leaf to base of the head.
^{2/}1=tight; 2=medium; 3=loose.

| Brand name | Hybrid | Yield ^{2/} Bu/A | Lodging Pct. | Height Ft. | Head exsertion ^{3/} In. | Mid-bloom Date | Head type ^{4/} Rating |
|----------------|-------------------|-----------------------------|-----------------|---------------|--|-------------------|--------------------------------------|
| Pioneer | 8225 | 42.0 | 0 | 2.4 | 3.0 | 7/6 | 3.0 |
| Funk's | G-522DR | 41.8 | 0 | 2.0 | 1.8 | 7/7 | 3.0 |
| Northrup, King | Savannah 5 | 41.8 | 0 | 2.5 | 5.3 | 7/5 | 3.0 |
| Growers | GSA 1180 | 41.4 | 0 | 2.2 | 4.0 | 7/1 | 3.0 |
| Funk's | G-662 | 41.4 | 0 | 2.1 | 3.5 | 7/5 | 3.0 |
| DeKalb | BR-65+ | 40.2 | 0 | 2.5 | 7.3 | 7/7 | 3.0 |
| Growers | GSA 1334 BR | 39.8 | 0 | 2.0 | 3.0 | 7/5 | 3.0 |
| Funk's | G-522 | 39.4 | 0 | 1.9 | 2.3 | 7/6 | 3.0 |
| Pioneer | B815 | 38.5 | 0 | 2.7 | 4.8 | 7/8 | 3.0 |
| Asgrow | Bug Off | 37.3 | 0 | 1.8 | 2.3 | 7/5 | 3.0 |
| Funk's | G-516BR | 37.2 | 0 | 2.0 | 2.5 | 7/5 | 3.0 |
| Surgro | ORO T | 36.7 | 0 | 2.4 | 2.5 | 7/5 | 3.0 |
| McCurdy | Birds-Off 81-D | 36.7 | 0 | 2.0 | 2.5 | 7/5 | 3.0 |
| McCurdy | M 51 YG | 36.4 | 0 | 1.9 | 2.8 | 7/2 | 3.0 |
| Asgrow | Bug Off M-D | 35.2 | 0 | 2.3 | 2.3 | 7/4 | 3.0 |
| Pioneer | 8272 | 35.0 | 0 | 1.9 | 3.0 | 7/5 | 3.0 |
| Surgro | ORO | 34.4 | 0 | 1.9 | 2.5 | 7/6 | 3.0 |
| Warner | W-832-D | 33.6 | 0 | 2.0 | 1.5 | 7/5 | 3.0 |
| DeKalb | E-59+ | 33.5 | 0 | 2.0 | 3.8 | 7/6 | 3.0 |
| Taylor-Evans | T-E Y101-R | 33.2 | 0 | 1.9 | 3.8 | 7/6 | 3.0 |
| McNair | 650 | 33.0 | 0 | 1.9 | 1.5 | 7/5 | 3.0 |
| Growers | ML 135 | 33.0 | 0 | 1.9 | 3.0 | 7/5 | 3.0 |
| Taylor-Evans | T-E Y111 -D | 32.4 | 0 | 2.0 | 1.8 | 7/5 | 3.0 |
| DeKalb | BR-64 | 32.1 | 0 | 2.7 | 4.8 | 7/1 | 3.0 |
| McNair | 550 -D | 32.1 | 0 | 2.2 | 5.3 | 7/7 | 3.0 |
| Pennington | Penngrain BR | 31.0 | 0 | 2.2 | 3.3 | 7/2 | 3.0 |
| Taylor-Evans | T-E Bird-A-Boo II | 30.8 | 0 | 2.1 | 1.8 | 7/5 | 3.0 |
| Northrup, King | 2778 | 30.4 | 0 | 2.0 | 1.8 | 7/5 | 3.0 |
| Warner | W-744 | 30.1 | 0 | 2.0 | 2.0 | 7/6 | 3.0 |
| | | | | 2.0 | 2.8 | 7/6 | 3.0 |

33.3
33.4

Continued

Plain Substation, Winfield 1977^{1/}

| Brand name | Hybrid | Yield ^{2/} Bu/A | Lodging Pct. | Height Ft. | Head exsertion ^{3/} In. | Mid-bloom Date | Head type ^{4/} Rating |
|----------------|-------------------|-----------------------------|-----------------|---------------|--|-------------------|--------------------------------------|
| Northrup, King | -----2779 | 27.9 | 0 | 1.9 | 1.8 | 7/5 | 3.0 |
| McCurdy | -----Birds-Off 91 | 27.7 | 0 | 2.0 | 3.8 | 7/6 | 3.0 |
| Warner | -----W-839DR | 26.3 | 0 | 2.2 | 2.3 | 7/7 | 2.5 |
| McNair | -----535 | 18.6 | 0 | 2.0 | 3.8 | 6/29 | 2.5 |
| Funk's | -----G-399 | 17.6 | 0 | 2.0 | 3.5 | 6/29 | 2.8 |
| Asgrow | -----Capitan | 11.9 | 0 | 2.1 | 3.5 | 7/15 | 3.0 |

^{1/}Planted May 2, 1977.

^{2/}Yields determined from bagged heads and calculated at 56 lb. per bushel.

^{3/}Measured from terminal leaf to base of the head.

^{4/}1 = tight; 2 = medium; 3 = loose.

Table 5. Yield and Other Characteristics of Late Planted Grain Sorghum Hybrids Tested Two Years at the Upper Coastal Plain Substation, Winfield, 1975-76

| Brand name | Hybrid | Yield Bu/A | Lodging Pct. | Height Ft. | Head exsertion ^{1/} In. | Head type ^{2/} Rating | Estimated bird damage Pct. |
|---------------|---------|---------------|-----------------|---------------|--|--------------------------------------|----------------------------------|
| DeKalb | BR-54 | 43.1 | 0 | 3.0 | 6.5 | 2.8 | 1 |
| Funk's | BR-79 | 39.6 | 4 | 2.9 | 4.8 | 3.0 | 0 |
| DeKalb | E-59 | 39.3 | 0 | 2.3 | 3.8 | 1.4 | 0 |
| Funk's | G-516BR | 38.7 | 0 | 2.3 | 3.0 | 2.9 | 2 |
| Northrup-King | X3101A | 38.4 | 0 | 3.1 | 5.8 | 1.0 | 0 |
| Penngrain | BR | 37.8 | 7 | 2.7 | 4.5 | 2.9 | 1 |
| Surgro | ORO T | 37.2 | 1 | 2.8 | 4.8 | 1.6 | 2 |
| McNair | 656 | 36.0 | 0 | 2.3 | 3.2 | 2.4 | 2 |
| Funk's | G-589 | 34.8 | 0 | 2.6 | 4.3 | 1.0 | 1 |
| Funk's | G-522 | 34.2 | 0 | 2.1 | 3.1 | 1.9 | 0 |
| McNair | 650 | 33.9 | 0 | 2.1 | 3.8 | 1.9 | 1 |
| Surgro | ORO | 33.5 | 0 | 2.1 | 2.6 | 1.8 | 1 |
| Warner | W-832 | 33.5 | 0 | 2.6 | 4.7 | 1.0 | 0 |
| Pioneer | B815 | 31.8 | 0 | 3.2 | 5.2 | 1.6 | 0 |
| Warner | W-866 | 27.4 | 4 | 2.9 | 5.3 | 1.0 | 3 |

^{1/}Measured from terminal leaf to base of the head.
^{2/}1 = tight; 2 = medium; 3 = loose.

Plain Substation, Winfield, 1976

| Brand name | Hybrid | Yield Bu/A | Lodging Pct. | Height Ft. | Head exsertion ^{2/} In. | Mid-bloom Date | Head type ^{3/} Rating | Estimated bird damage Pct. |
|---------------|-------------|---------------|-----------------|---------------|--|-------------------|--------------------------------------|----------------------------------|
| DeKalb | BR-54 | 53.6 | 1 | 2.6 | 3.3 | 8/26 | 2.7 | 2 |
| Surgro | ORO T | 53.1 | 1 | 2.3 | 1.5 | 8/25 | 2.0 | 4 |
| Penngrain | BR | 52.2 | 0 | 2.1 | 1.8 | 8/26 | 2.8 | 1 |
| Growers | GSA 1210 | 52.0 | 0 | 2.3 | 1.8 | 8/25 | 1.8 | 4 |
| Growers | GSA 1334 BR | 51.9 | 0 | 2.1 | 2.5 | 8/29 | 2.8 | 1 |
| Funk's | BR-79 | 50.3 | 5 | 2.5 | 1.5 | 8/20 | 3.0 | 0 |
| Funk's | G-522 | 49.3 | 0 | 1.9 | 2.0 | 8/27 | 2.0 | 0 |
| DeKalb | BR-65 | 48.3 | 0 | 2.6 | 4.0 | 8/28 | 1.0 | 0 |
| Asgrow | Dorado M | 47.2 | 0 | 2.1 | 2.3 | 8/27 | 2.8 | 5 |
| Funk's | G-516 BR | 45.9 | 0 | 2.2 | 1.7 | 9/01 | 3.0 | 3 |
| Pioneer | B18 | 45.7 | 0 | 3.0 | 3.7 | 8/28 | 1.7 | 0 |
| Surgro | ORO | 45.0 | 1 | 1.8 | 1.3 | 8/23 | 2.0 | 1 |
| Growers | ML 135 | 44.3 | 0 | 1.8 | 1.8 | 8/25 | 2.3 | 1 |
| McNair | 650 | 43.8 | 0 | 1.9 | 1.5 | 8/26 | 2.0 | 3 |
| Warner | W-832 | 43.3 | 0 | 2.2 | 2.7 | 8/27 | 1.0 | 0 |
| Funk's | G-589 | 42.5 | 0 | 2.3 | 1.8 | 8/26 | 1.0 | 3 |
| DeKalb | E-59 | 42.0 | 1 | 2.1 | 2.0 | 8/28 | 1.5 | 0 |
| McNair | 656 | 40.7 | 0 | 2.1 | 1.7 | 8/26 | 2.3 | 3 |
| Pioneer | B815 | 40.4 | 0 | 3.0 | 3.3 | 8/28 | 1.7 | 0 |
| Asgrow | Capitan | 40.2 | 0 | 2.0 | 2.8 | 9/01 | 1.3 | 1 |
| Northrup-King | X3101A | 40.0 | 1 | 2.4 | 2.8 | 8/27 | 1.0 | 0 |
| Funk's | G-622GBR | 39.8 | 1 | 2.0 | 1.5 | 8/23 | 2.0 | 3 |
| Warner | W-744 | 39.8 | 0 | 2.0 | 2.3 | 8/27 | 3.0 | 3 |
| Growers | GSA 1180 | 39.5 | 1 | 2.1 | 2.3 | 8/25 | 1.3 | 0 |
| Funk's | G-722DR | 35.2 | 0 | 2.4 | 3.3 | 9/01 | 1.0 | 0 |
| Asgrow | Bug Off | 34.6 | 1 | 1.8 | 2.0 | 8/27 | 2.3 | 1 |
| Penngrain | YE | 33.5 | 0 | 1.8 | 1.7 | 8/27 | 2.0 | 3 |
| Warner | W-866 | 32.7 | 8 | 2.4 | 2.3 | 8/24 | 1.0 | 5 |

Continued

Table 6. (Cont'd) Yield and Other Characteristics of Late Planted Grain Sorghum Hybrids Tested at the Upper Coastal Plain Substation, Winfield, 1976^{1/}

| Brand name | Hybrid | Yield Bu/A | Lodging Pct. | Height Ft. | Head exsertion ^{2/} In. | Mid-bloom Date | Head type ^{3/} Rating | Estimated bird damage Pct. |
|------------|-----------|---------------|-----------------|---------------|--|-------------------|--------------------------------------|----------------------------------|
| | | | | | | | | |
| McNair | -----695D | 26.3 | 2 | 2.1 | 3.3 | 8/28 | 1.7 | 2 |
| McNair | -----650D | 20.5 | 3 | 1.9 | 1.5 | 8/26 | 2.0 | 0 |

^{1/}Planted June 22, 1976.

^{2/}Measured from terminal leaf to base of the head.

^{3/}1 = tight; 2 = medium; 3 = loose.

Table 7. Yield and Other Characteristics of Grain Sorghum Hybrids Tested Three Years at
Prattville Field, 1975-77

| Brand name | Hybrid | Yield Bu/A | Lodging Pct. | Height Ft. | Head exsertion ^{1/} In. | Head type ^{2/} Rating |
|-----------------|--------------|---------------|-----------------|---------------|--|--------------------------------------|
| Pioneer----- | B815 | 54.1 | 16 | 4.2 | 5.2 | 2.0 |
| Pennington----- | Penngrain BR | 53.5 | 1 | 3.9 | 4.8 | 2.9 |
| Funk's----- | G-516BR | 48.3 | 2 | 3.7 | 3.8 | 2.9 |

^{1/}Measured from terminal leaf to base of the head.
^{2/}1=tight; 2=medium; 3=loose.

Table 8. Yield and Other Characteristics of Grain Sorghum Hybrids Tested Two Years at Prattville Field, 1976-77

| Brand name | Hybrid | Yield Bu/A | Lodging Pct. | Height Ft. | Head exsertion ^{1/} In. | Head type ^{2/} Rating |
|------------|-------------------|---------------|-----------------|---------------|--|--------------------------------------|
| Surgro | -----ORO | 56.7 | 1 | 3.3 | 3.5 | 2.4 |
| Funk's | -----G-522 | 54.1 | 0 | 3.3 | 3.5 | 2.1 |
| Pioneer | -----B815 | 53.9 | 25 | 4.0 | 5.3 | 2.0 |
| Growers | -----GSA 1334 BR | 50.7 | 3 | 3.5 | 4.2 | 3.0 |
| Asgrow | -----Capitan | 50.6 | 0 | 3.4 | 3.3 | 2.1 |
| Growers | -----ML 135 | 50.1 | 1 | 3.4 | 2.5 | 2.6 |
| McNair | -----650 | 48.7 | 1 | 3.3 | 4.9 | 2.5 |
| Surgro | -----ORO T | 47.2 | 7 | 4.0 | 3.8 | 2.1 |
| Pennington | -----Penngrain BR | 46.1 | 2 | 3.5 | 4.0 | 2.9 |
| Funk's | -----G-516BR | 43.0 | 3 | 3.4 | 2.8 | 2.9 |
| Asgrow | -----Bug Off | 40.9 | 1 | 3.2 | 3.4 | 2.3 |
| Warner | -----W-744 | 40.4 | 9 | 3.5 | 5.4 | 2.9 |
| Warner | -----W-832 | 25.9 | 0 | 3.6 | 4.3 | 1.0 |

^{1/}Measured from terminal leaf to base of the head.
^{2/}1=tight; 2=medium; 3=loose.

CHARACTERISTICS OF Grain Sorghum Hybrids Tested at Prattville Field, 1977¹

| Brand name | Hybrid | Yield ² / Bu/A | Lodging Pct. | Height Ft. | Head exsertion ³ / In. | Head type ⁴ / Rating |
|----------------|-------------------|------------------------------|-----------------|---------------|---|---------------------------------------|
| DeKalb | BR 64 | 39.9 | 0 | 4.2 | 8.0 | 2.8 |
| Pioneer | 8225 | 36.3 | 1 | 3.9 | 8.0 | 1.0 |
| Northrup, King | Savannah 5 | 33.6 | 10 | 5.0 | 10.0 | 1.0 |
| McNair | 550 | 32.8 | 1 | 3.5 | 4.5 | 2.5 |
| Surgro | ORO | 31.7 | 1 | 3.3 | 3.8 | 2.8 |
| Funk's | G-522 | 31.4 | 0 | 3.1 | 4.3 | 2.3 |
| Pioneer | 8272 | 26.3 | 1 | 3.5 | 5.3 | 1.8 |
| Growers | GSA 1334 BR | 26.2 | 0 | 3.6 | 5.3 | 3.0 |
| Taylor-Evans | T-E Y101-R | 25.4 | 2 | 3.1 | 6.7 | 2.7 |
| Northrup, King | 2778 | 24.5 | 1 | 3.6 | 8.0 | 1.5 |
| Pioneer | B815 | 24.4 | 1 | 3.9 | 7.3 | 2.0 |
| Surgro | ORO T | 24.1 | 2 | 3.9 | 4.8 | 2.3 |
| McNair | 535 | 24.0 | 1 | 3.3 | 4.3 | 1.8 |
| Asgrow | Bug Off M | 23.6 | 0 | 3.7 | 6.0 | 1.5 |
| Growers | ML 135 | 22.8 | 3 | 3.4 | 2.5 | 3.0 |
| Funk's | G-516BR | 22.6 | 2 | 3.5 | 3.3 | 2.8 |
| McNair | 650 | 21.2 | 1 | 3.3 | 7.0 | 2.8 |
| Taylor-Evans | T-E Bird-A-Boo II | 20.4 | 5 | 3.5 | 4.8 | 3.0 |
| Warner | W-832 | 20.4 | 0 | 3.5 | 5.0 | 1.0 |
| Asgrow | Capitan | 20.3 | 1 | 3.5 | 3.5 | 2.3 |
| Funk's | G-522DR | 19.8 | 0 | 3.6 | 8.0 | 2.0 |
| McCurdy | M 51 YG | 19.6 | 10 | 3.0 | 3.5 | 3.0 |
| DeKalb | BR-65+ | 18.7 | 1 | 3.9 | 5.3 | 2.0 |
| DeKalb | E-59+ | 18.5 | 0 | 3.4 | 5.8 | 2.0 |
| Warner | W-839DR | 18.3 | 0 | 3.3 | 3.0 | 2.3 |
| Pennington | Penngrain BR | 17.9 | 1 | 3.5 | 4.8 | 1.5 |
| Asgrow | Bug Off | 17.8 | 3 | 3.1 | 4.3 | 2.8 |
| McCurdy | Birds-Off 81-9 | 17.4 | 0 | 3.1 | 7.5 | 2.0 |
| | | | | | | 2.8 |

Continued

CHARACTERISTICS OF Grain Sorghum Hybrids Tested at Prattville Field, 1977^{1/}

| Brand name | Hybrid | Yield ^{2/} Bu/A | Lodging Pct. | Height Ft. | Head exsertion ^{3/} In. | Head type ^{4/} Rating |
|--------------------|--------------|-----------------------------|-----------------|---------------|--|--------------------------------------|
| Northrup, King---- | 2779 | 17.2 | 1 | 3.1 | 6.7 | 1.7 |
| McCurdy----- | Birds-Off 91 | 16.9 | 1 | 3.5 | 4.5 | 2.8 |
| Funk's----- | G-662 | 16.4 | 2 | 3.2 | 6.0 | 2.7 |
| Warner----- | M-744 | 15.9 | 10 | 3.5 | 7.5 | 2.8 |
| Taylor-Evans----- | T-E Y 111 | 13.3 | 5 | 3.0 | 3.5 | 1.0 |
| Funk's----- | G-399 | 11.7 | 1 | 3.3 | 3.5 | 1.5 |

^{1/}Planted June 6, 1977.

^{2/}Yields determined from bagged heads and calculated at 56 lb. per bushel.

^{3/}Measured from terminal leaf to base of the head.

^{4/}1 = tight; 2 = medium; 3 = loose.

... and other characteristics of Grain Sorghum Hybrids Tested at the Powell Farm, Pratt-ville, 19761/

| Brand name | Hybrid | Yield ² / Bu/A | Lodging Pct. | Height Ft. | Head exsertion ³ / In. | Head type ⁴ / Rating | Estimated bird damage Pct. |
|---------------|------------------|------------------------------|-----------------|---------------|---|---------------------------------------|----------------------------------|
| Pioneer | -----B18 | 79.5 | 3 | 4.3 | 5.3 | 2.5 | 0 |
| DeKalb | -----BR-54 | 77.0 | 4 | 4.7 | 7.5 | 2.8 | 0 |
| Pioneer | -----B815 | 75.2 | 1 | 4.5 | 7.0 | 2.0 | 0 |
| Northrup-King | -----X3101A | 72.6 | 0 | 4.6 | 7.5 | 1.0 | 0 |
| Growers | -----GSA 1334 BR | 69.1 | 0 | 3.9 | 5.5 | 3.0 | 0 |
| Penngrain | -----BR | 67.1 | 0 | 4.0 | 5.0 | 3.0 | 0 |
| McNair | -----656 | 66.1 | 0 | 3.9 | 6.0 | 2.5 | 0 |
| Funk's | -----BR-79 | 64.6 | 8 | 4.0 | 6.0 | 3.0 | 0 |
| Warner | -----W-744 | 63.5 | 0 | 4.0 | 7.5 | 2.8 | 0 |
| Funk's | -----G-516BR | 63.2 | 0 | 3.9 | 6.0 | 3.0 | 0 |
| DeKalb | -----E-59 | 61.2 | 0 | 3.7 | 6.0 | 2.8 | 0 |
| DeKalb | -----BR-65 | 60.6 | 0 | 4.2 | 7.0 | 1.5 | 4 |
| Surgro | -----ORO T | 57.4 | 2 | 4.3 | 6.0 | 2.3 | 0 |
| Funk's | -----G-522 | 54.3 | 0 | 3.4 | 6.0 | 3.0 | 11 |
| Warner | -----W-866 | 54.3 | 0 | 4.2 | 6.0 | 1.0 | 16 |
| Asgrow | -----Capitan | 52.7 | 0 | 3.6 | 6.5 | 2.0 | 15 |
| Asgrow | -----Dorado M | 51.3 | 1 | 4.1 | 7.0 | 3.0 | 7 |
| Northrup-King | -----284 | 51.3 | 0 | 3.6 | 6.5 | 1.8 | 13 |
| Funk's | -----G-622GBR | 50.4 | 0 | 3.8 | 7.0 | 2.8 | 7 |
| Funk's | -----G-589 | 50.1 | 0 | 4.1 | 6.0 | 1.3 | 10 |
| Growers | -----GSA 1210 | 49.5 | 0 | 4.0 | 6.5 | 2.0 | 17 |
| Surgro | -----ORO | 49.1 | 1 | 3.5 | 5.5 | 2.8 | 22 |
| Penngrain | -----YE | 48.4 | 0 | 3.5 | 6.0 | 2.8 | 9 |
| Asgrow | -----Bug Off | 47.6 | 0 | 3.6 | 6.0 | 3.0 | 7 |
| Growers | -----ML 135 | 47.1 | 0 | 3.4 | 5.5 | 3.0 | 15 |
| Funk's | -----G-722DR | 46.8 | 0 | 4.4 | 6.5 | 1.0 | 15 |
| | | | | | | | 4 |

Continued

Yield and other Characteristics of Grain Sorghum Hybrids Tested at the Powell Farm,
Prattville, 1976^{1/}

| Brand name | Hybrid | Yield ^{2/} Bu/A | Lodging Pct. | Height Ft. | Head exsertion ^{3/} In. | Head type ^{4/} Rating | Estimated bird damage Pct. |
|------------|---------------|-----------------------------|-----------------|---------------|--|--------------------------------------|----------------------------------|
| Growers | -----GSA 1180 | 46.8 | 0 | 3.6 | 6.0 | 2.0 | 21 |
| Warner | -----W-832 | 45.9 | 0 | 4.1 | 6.5 | 1.0 | 18 |
| McNair | -----650 | 45.5 | 0 | 3.6 | 6.0 | 3.0 | 6 |
| McNair | -----695D | 39.4 | 0 | 4.1 | 7.0 | 2.3 | 2 |
| McNair | -----695D | 33.3 | 0 | 3.6 | 5.5 | 3.0 | 1 |

^{1/}Planted June 16, 1976.

^{2/}Yields adjusted to 14% moisture and 56 lb. per bushel.

^{3/}Measured from terminal leaf to base of the head.

^{4/}1 = tight; 2 = medium; 3 = loose.

Table 11. Yield and Other Characteristics of Grain Sorghum Hybrids Tested Two Years at the Black Belt Substation, Marion Junction, 1975-76

| Brand name | Hybrid | Yield Bu/A | Lodging Pct. | Height Ft. | Head exsertion ^{1/} In. | Head type ^{2/} Rating |
|---------------|--------------|---------------|-----------------|---------------|--|--------------------------------------|
| Surgro- | -----ORO T | 74.1 | 0 | 4.7 | 7.0 | 2.0 |
| Funk's | -----G-516BR | 70.7 | 0 | 3.9 | 6.4 | 2.9 |
| Pioneer | -----B815 | 70.1 | 0 | 4.7 | 6.1 | 1.8 |
| DeKalb | -----BR-54 | 68.4 | 0 | 5.2 | 7.6 | 2.9 |
| McNair | -----656 | 68.4 | 0 | 3.9 | 6.6 | 2.8 |
| Funk's | -----G-522 | 66.6 | 0 | 3.7 | 6.3 | 2.4 |
| McNair | -----650 | 66.0 | 0 | 3.8 | 7.1 | 2.3 |
| Funk's | -----BR-79 | 65.3 | 1 | 4.7 | 6.8 | 2.5 |
| Penngrain | -----BR | 65.2 | 0 | 4.3 | 6.1 | 2.5 |
| Surgro | -----ORO | 63.3 | 0 | 3.8 | 6.4 | 2.4 |
| Funk's | -----G-589 | 63.2 | 0 | 4.1 | 6.0 | 1.4 |
| DeKalb | -----E-59 | 62.6 | 0 | 3.8 | 5.5 | 2.4 |
| Northrup-King | -----X3101A | 57.8 | 0 | 5.1 | 7.0 | 1.0 |

^{1/}Measured from terminal leaf to base of the head.
^{2/}1 = tight; 2 = medium; 3 = loose.

Yield and other characteristics of Grain Sorghum Hybrids Tested at the Black Belt Substation,
Marion Junction, 1976¹

| Brand name | Hybrid | Yield Bu/A | Lodging Pct. | Height Ft. | Head exsertion ² / In. | Mid-bloom Date | Head type ³ / Rating |
|---------------|------------------|---------------|-----------------|---------------|---|-------------------|---------------------------------------|
| Surgro | -----ORO T | 92.0 | 0 | 4.3 | 4.5 | 7/21 | 2.0 |
| Asgrow | -----Dorado M | 89.7 | 0 | 4.0 | 4.3 | 7/23 | 2.8 |
| Funk's | -----G-516BR | 86.9 | 0 | 3.6 | 4.0 | 7/19 | 3.0 |
| Warner | -----W-866 | 86.7 | 0 | 4.1 | 4.5 | 7/21 | 1.0 |
| Growers | -----ML 135 | 84.3 | 0 | 3.4 | 2.8 | 7/20 | 2.8 |
| McNair | -----650 | 84.1 | 0 | 3.5 | 4.5 | 7/22 | 2.3 |
| Asgrow | -----Bug Off | 82.5 | 0 | 3.3 | 3.8 | 7/19 | 2.3 |
| Funk's | -----G-522 | 81.0 | 0 | 3.4 | 3.5 | 7/22 | 2.5 |
| Growers | -----GSA 1334 BR | 78.6 | 0 | 3.8 | 4.8 | 7/22 | 2.8 |
| Growers | -----GSA 1210 | 78.4 | 0 | 3.9 | 5.3 | 7/21 | 2.0 |
| Surgro | -----ORO | 78.4 | 0 | 3.5 | 4.0 | 7/22 | 2.8 |
| DeKalb | -----BR-54 | 78.2 | 0 | 4.8 | 6.0 | 7/22 | 3.0 |
| DeKalb | -----BR-65 | 77.4 | 0 | 3.6 | 4.4 | 7/26 | 1.0 |
| Funk's | -----G-589 | 77.2 | 0 | 3.8 | 4.0 | 7/23 | 1.0 |
| Pioneer | -----B18 | 76.4 | 0 | 4.4 | 4.5 | 7/25 | 1.5 |
| Penngrain | -----YE | 76.2 | 0 | 3.3 | 3.0 | 7/23 | 2.5 |
| Funk's | -----BR-79 | 76.0 | 3 | 4.4 | 4.8 | 7/21 | 2.8 |
| Pioneer | -----B815 | 75.6 | 0 | 4.3 | 3.3 | 7/23 | 1.5 |
| McNair | -----656 | 75.2 | 0 | 3.5 | 4.3 | 7/20 | 3.0 |
| Warner | -----W-744 | 74.6 | 1 | 3.7 | 4.3 | 7/21 | 3.0 |
| Northrup-King | -----284 | 73.5 | 0 | 3.7 | 4.5 | 7/23 | 2.0 |
| Northrup-King | -----X3101A | 72.5 | 0 | 4.8 | 6.0 | 7/23 | 1.0 |
| Warner | -----W-832 | 72.3 | 0 | 3.7 | 4.5 | 7/24 | 1.0 |
| DeKalb | -----E-59 | 71.7 | 0 | 3.4 | 3.3 | 7/24 | 1.0 |
| Funk's | -----G-622GBR | 69.7 | 0 | 3.4 | 4.0 | 7/20 | 2.8 |
| Asgrow | -----Captain | 68.9 | 0 | 3.4 | 2.5 | 7/26 | 2.0 |
| Penngrain | -----BR | 67.3 | 0 | 3.7 | 4.0 | 7/21 | 3.0 |

Continued

Table 12. (Cont'd) Yield and Other Characteristics of Grain Sorghum Hybrids Tested at the Black Belt Substation, Marion Junction, 1976^{1/}

| Brand name | Hybrid | Yield Bu/A | Lodging Pct. | Height Ft. | Head exsertion ^{2/} In. | Mid-bloom Date | Head type ^{3/} Rating |
|------------|---------------|---------------|-----------------|---------------|--|-------------------|--------------------------------------|
| Growers | -----GSA 1180 | 63.4 | 0 | 3.5 | 4.8 | 7/24 | 2.3 |
| McNair | -----650D | 61.6 | 0 | 3.5 | 4.3 | 7/23 | 2.0 |
| McNair | -----695D | 55.1 | 0 | 3.9 | 3.3 | 7/23 | 1.8 |
| Funk's | -----G-722DR | 49.8 | 0 | 4.0 | 3.5 | 7/28 | 1.0 |

^{1/}Planted April 30, 1976.

^{2/}Measured from terminal leaf to base of the head.

^{3/}1 = tight; 2 = medium; 3 = loose.

Table 13. Yield and Other Characteristics of Grain Sorghum Hybrids Tested Three Years at the Lower Coastal Plain Substation, Camden, 1975-77

| Brand name | Hybrid | Yield Bu/A | Lodging Pct. | Height Ft. | Head exsertion ^{1/} In. | Head type ^{2/} Rating |
|------------|--------------|---------------|-----------------|---------------|--|--------------------------------------|
| Pioneer | B815 | 60.8 | 2 | 4.1 | 3.7 | 1.8 |
| Surgro | OR0 T | 54.6 | 1 | 3.8 | 3.6 | 2.1 |
| McNair | 650 | 49.3 | 2 | 3.2 | 3.8 | 2.4 |
| Funk's | G-516BR | 48.2 | 0 | 3.3 | 3.6 | 2.8 |
| Pennington | Penngrain BR | 46.6 | 21 | 3.6 | 4.4 | 2.8 |
| Growers | ML 135 | 44.2 | 0 | 3.1 | 3.6 | 2.4 |
| Surgro | OR0 | 41.6 | 1 | 3.2 | 4.6 | 2.1 |
| Funk's | G-522 | 39.7 | 5 | 3.2 | 3.4 | 2.4 |

^{1/}Measured from terminal leaf to base of the head.
^{2/}1=tight; 2=medium; 3=loose.

Table 14. Yield and Other Characteristics of Grain Sorghum Hybrids Tested Two Years at the Lower Coastal Plain Substation, Camden, 1976-77

| Brand name | Hybrid | Yield Bu/A | Lodging Pct. | Height Ft. | Head exsertion ^{1/} In. | Head type ^{2/} Rating |
|------------|--------------|---------------|-----------------|---------------|--|--------------------------------------|
| Pioneer | B815 | 51.6 | 0 | 3.8 | 2.9 | 1.6 |
| Surgro | ORO T | 48.8 | 0 | 3.3 | 2.8 | 2.1 |
| Funk's | G-516BR | 48.7 | 0 | 2.9 | 2.9 | 2.6 |
| Pennington | Penngrain BR | 48.6 | 1 | 3.2 | 4.0 | 2.6 |
| Growers | GSA 1334 BR | 46.4 | 0 | 3.2 | 4.1 | 2.8 |
| McNair | 650 | 46.0 | 0 | 2.8 | 2.6 | 2.5 |
| Growers | ML 135 | 42.2 | 0 | 2.7 | 2.4 | 2.5 |
| Warner | W-744 | 41.0 | 0 | 3.0 | 3.6 | 2.5 |
| Asgrow | Capitan | 39.5 | 0 | 3.0 | 3.8 | 2.5 |
| Surgro | ORO | 37.5 | 0 | 2.8 | 3.9 | 1.5 |
| Asgrow | Bug Off | 36.3 | 0 | 2.7 | 2.4 | 2.1 |
| Funk's | G-522 | 35.4 | 0 | 2.9 | 2.7 | 2.4 |
| Warner | W-832 | 35.4 | 0 | 3.2 | 3.1 | 2.5 |
| Growers | GSA 1180 | 30.3 | 0 | 3.0 | 4.5 | 1.1 |
| | | | | | | 2.0 |

^{1/}Measured from terminal leaf to base of the head.
^{2/}1=tight; 2=medium; 3=loose.

Table 15 Yield and Other Characteristics of Grain Sorghum Hybrids Tested at the Lower Coastal Plain Substation, Camden, 1977¹

| Brand name | Hybrid | Yield ² / Bu/A | Lodging Pct. | Height Ft. | Head exsertion ³ / In. | Head type ⁴ / Rating |
|----------------|---------------------|------------------------------|-----------------|---------------|---|---------------------------------------|
| Northrup, King | Savannah 5 | 66.5 | 0 | 3.8 | 2.3 | 1.0 |
| DeKalb | BR-64 | 57.2 | 0 | 3.6 | 2.8 | 2.0 |
| McNair | 650 | 50.6 | 0 | 2.9 | 2.0 | 2.8 |
| Funk's | G-516BR | 50.3 | 0 | 3.0 | 1.5 | 3.0 |
| Growers | GSA 1334 BR | 50.2 | 0 | 3.1 | 2.3 | 3.0 |
| Taylor-Evans | T-E Bird-A-Boo II-D | 49.9 | 0 | 2.9 | 1.5 | 3.0 |
| Surgro | ORO T | 46.5 | 0 | 3.2 | 1.0 | 2.5 |
| Pennington | Penngrain BR | 46.2 | 0 | 3.1 | 1.8 | 3.0 |
| Taylor-Evans | T-E Y101-R | 43.2 | 0 | 2.8 | 3.3 | 2.5 |
| Pioneer | B815 | 43.0 | 0 | 3.8 | 1.5 | 1.5 |
| Pioneer | 8311 | 42.9 | 0 | 3.3 | 1.0 | 2.3 |
| Asgrow | Capitan | 41.8 | 0 | 3.0 | 1.8 | 1.3 |
| Surgro | ORO | 40.8 | 0 | 2.8 | 1.3 | 2.3 |
| Growers | ML 135 | 40.1 | 0 | 2.7 | 2.0 | 2.5 |
| Warner | W-744 | 39.5 | 0 | 3.0 | 2.5 | 2.8 |
| Pioneer | 8225 | 37.6 | 0 | 3.2 | 2.0 | 1.3 |
| Funk's | G-623GBR | 34.9 | 0 | 2.8 | 1.0 | 2.8 |
| McCurdy | Birds-Off 91 | 33.9 | 0 | 3.1 | 1.3 | 3.0 |
| Asgrow | Bug Off | 33.7 | 0 | 2.7 | 1.0 | 2.8 |
| McNair | 654 -P | 33.0 | 0 | 3.0 | 1.8 | 3.0 |
| Funk's | G-642GBR-D | 32.6 | 0 | 3.0 | 0.5 | 3.0 |
| Warner | W-839DR-D | 32.3 | 0 | 2.9 | 1.3 | 1.0 |
| Funk's | G-522 | 32.2 | 0 | 3.1 | 1.3 | 2.8 |
| DeKalb | F-67 -D | 30.1 | 0 | 3.2 | 2.8 | 3.0 |
| Northrup, King | Savannah 3-D | 28.8 | 0 | 3.0 | 3.3 | 3.0 |
| McCurdy | Birds-Off 81-D | 27.8 | 0 | 3.0 | 2.0 | 3.0 |
| Growers | GSA 1180 | 27.4 | 0 | 2.9 | 3.0 | 2.3 |
| DeKalb | E-59+ | 27.3 | 0 | 3.2 | 2.3 | 2.5 |
| Warner | W-832 -D | | 0 | | 2.5 | 1.0 |

X
26.3

Continued

Table 15. (Cont'd) Yield and Other Characteristics of Grain Sorghum Hybrids Tested at the Lower Coastal Plain Substation, Camden, 1977^{1/}

| Brand name | Hybrid | Yield ^{2/} Bu/A | Lodging Pct. | Height Ft. | Head exertion ^{3/} In. | Head type ^{4/} Rating |
|----------------|-------------------|-----------------------------|-----------------|---------------|---------------------------------------|--------------------------------------|
| McNair | -----535 | 26.0 | 0 | 2.6 | 2.0 | 2.5 |
| McNair | -----550 -D | 25.9 | 0 | 2.7 | 2.3 | 3.0 |
| Taylor-Evans | -----T-E Y 111 -D | 25.1 | 0 | 2.9 | 1.8 | 2.3 |
| McCurdy | -----M 89 YG -D | 22.2 | 0 | 2.9 | 3.5 | 3.0 |
| Asgrow | -----Bug Off M -D | 21.3 | 0 | 3.0 | 2.8 | 2.8 |
| Northrup, King | -----2779 | 16.9 | 0 | 2.9 | 2.3 | 2.8 |
| Funk's | -----G-399 | 15.7 | 0 | 2.8 | 3.0 | 2.8 |

^{1/}Planted May 11, 1977.

^{2/}Yields determined from bagged heads and calculated at 56 lb. per bushel.

^{3/}Measured from terminal leaf to base of the head.

^{4/}1 = tight; 2 = medium; 3 = loose.

Table 16. Yield and Other Characteristics of Grain Sorghum Hybrids Tested Three Years at Monroeville Field, 1975-77

| Brand name | Hybrid | Yield Bu/A | Lodging Pct. | Height Ft. | Head exsertion ^{1/} In. | Head type ^{2/} Rating |
|------------|-------------------|---------------|-----------------|---------------|--|--------------------------------------|
| Pennington | -----Penngrain BR | 63.0 | 6 | 4.1 | 15.3 | 2.8 |
| Pioneer | -----B815 | 61.9 | 2 | 4.3 | 14.7 | 1.9 |
| Funk's | -----G-516BR | 55.4 | 0 | 4.0 | 14.9 | 2.9 |
| Surgro | -----ORO | 55.2 | 3 | 3.7 | 14.4 | 2.5 |
| McNair | -----650 | 54.9 | 2 | 3.7 | 14.9 | 2.5 |
| Funk's | -----G-522 | 54.3 | 3 | 3.6 | 13.9 | 2.6 |
| Asgrow | -----Capitan | 53.8 | 0 | 3.7 | 15.0 | 1.9 |
| Surgro | -----ORO T | 53.3 | 13 | 4.5 | 13.9 | 2.3 |

^{1/}Measured from terminal leaf to base of the head.

^{2/}1=tight; 2=medium; 3=loose.

Table 17. Yield and Other Characteristics of Grain Sorghum Hybrids Tested Two Years at Monroeville Field, 1976-77

| Brand name | Hybrid | Yield Bu/A | Lodging Pct. | Height Ft. | Head exsertion ^{1/} In. | Head type ^{2/} Rating |
|------------|-------------------|---------------|-----------------|---------------|--|--------------------------------------|
| Surgro | -----ORO T | 76.5 | 20 | 4.5 | 12.9 | 2.3 |
| Pennington | -----Penngrain BR | 76.4 | 1 | 3.9 | 14.3 | 2.9 |
| Pioneer | -----B815 | 75.9 | 3 | 4.3 | 13.5 | 1.8 |
| Growers | -----ML 135 | 75.9 | 3 | 3.7 | 14.5 | 2.5 |
| Surgro | -----ORO | 73.4 | 4 | 3.7 | 13.9 | 2.5 |
| Asgrow | -----Capitan | 72.5 | 0 | 3.7 | 14.3 | 2.0 |
| McNair | -----650 | 70.7 | 2 | 3.7 | 13.8 | 2.6 |
| Growers | -----GSA 1334 BR | 70.2 | 1 | 3.9 | 12.6 | 3.0 |
| Funk's | -----G-522 | 70.1 | 2 | 3.6 | 12.1 | 2.5 |
| Asgrow | -----Bug Off | 68.6 | 0 | 3.7 | 14.8 | 2.3 |
| Funk's | -----G-516BR | 65.4 | 1 | 3.9 | 14.0 | 2.9 |
| Warner | -----W-744 | 62.9 | 2 | 4.0 | 14.0 | 3.0 |
| Growers | -----GSA 1180 | 48.5 | 2 | 3.8 | 14.4 | 1.5 |
| Warner | -----W-832 | 39.1 | 3 | 4.0 | 13.6 | 1.0 |

^{1/}Measured from terminal leaf to base of the head.
^{2/}1=tight; 2=medium; 3=loose.

Table 18. Yield and Other Characteristics of Grain Sorghum Hybrids Tested at Monroeville Field, 1977^{1/}

| Brand name | Hybrid | Yield ^{2/} Bu/A | Lodging Pct. | Height Ft. | Head exsertion ^{3/} In. | Mid-bloom Date | Head type ^{4/} Rating |
|----------------|------------------------|-----------------------------|-----------------|---------------|--|-------------------|--------------------------------------|
| Asgrow | -----Capitan | 97.0 | 0 | 4.4 | 15.5 | 7/21 | 2.0 |
| Growers | -----ML 135 | 93.2 | 0 | 4.0 | 16.5 | 7/16 | 2.0 |
| McNair | -----550 | 91.6 | 0 | 4.3 | 14.8 | 7/18 | 2.3 |
| Surgro | -----ORO T | 91.4 | 10 | 5.1 | 15.3 | 7/17 | 2.0 |
| Pioneer | -----B815 | 86.5 | 1 | 4.8 | 15.5 | 7/20 | 1.3 |
| Surgro | -----ORO | 85.2 | 1 | 4.1 | 15.3 | 7/16 | 2.0 |
| DeKalb | -----F-67 | 85.1 | 0 | 3.9 | 15.0 | 7/20 | 2.3 |
| DeKalb | -----BR 64 | 85.0 | 1 | 5.0 | 17.8 | 7/21 | 2.8 |
| Taylor-Evans | -----T-E Y101-R | 83.6 | 1 | 4.1 | 15.0 | 7/16 | 2.0 |
| Pennington | -----Penngrain BR | 83.3 | 0 | 4.4 | 15.0 | 7/21 | 2.8 |
| Asgrow | -----Bug Off M | 80.7 | 1 | 4.6 | 17.0 | 7/17 | 1.8 |
| Funk's | -----G-522 | 80.4 | 0 | 4.1 | 14.0 | 7/17 | 2.0 |
| McNair | -----654 | 79.7 | 3 | 4.7 | 16.0 | 7/16 | 2.0 |
| McNair | -----650 | 78.8 | 0 | 4.1 | 15.0 | 7/17 | 2.3 |
| McNair | -----535 | 78.6 | 1 | 3.8 | 15.0 | 7/14 | 1.8 |
| DeKalb | -----E-59+ | 77.7 | 0 | 4.0 | 15.8 | 7/20 | 2.0 |
| Northrup, King | -----Savannah 5 | 77.6 | 10 | 5.7 | 19.8 | 7/20 | 1.0 |
| Warner | -----W-839DR | 77.6 | 0 | 4.1 | 14.0 | 7/18 | 1.0 |
| Asgrow | -----Bug Off | 77.3 | 0 | 4.0 | 16.3 | 7/18 | 2.0 |
| Northrup, King | -----2779 | 74.5 | 1 | 4.1 | 15.5 | 7/17 | 2.0 |
| Growers | -----GSA 1334 BR | 71.5 | 1 | 4.3 | 14.8 | 7/21 | 3.0 |
| Funk's | -----G-623GBR | 70.9 | 0 | 4.1 | 16.5 | 7/17 | 2.0 |
| McCurdy | -----Birds-Off 81 | 70.3 | 0 | 3.6 | 15.0 | 7/20 | 3.0 |
| Taylor-Evans | -----T-E Bird-A-Boo II | 68.7 | 1 | 4.4 | 15.5 | 7/20 | 3.0 |
| McCurdy | -----Birds-Off 91 | 67.6 | 0 | 4.1 | 13.8 | 7/22 | 3.0 |
| McCurdy | -----M 89 YG | 64.2 | 1 | 4.5 | 16.0 | 7/16 | 2.0 |
| Funk's | -----G-516BR | 64.0 | 0 | 4.4 | 16.0 | 7/20 | 2.8 |
| Warner | -----W-744 | 62.8 | 0 | 4.5 | 15.3 | 7/20 | 3.0 |
| Taylor-Evans | -----T-E Y 111 | 57.0 | 0 | 4.2 | 14.5 | 7/14 | 1.8 |

Continued

Table 18. (Cont'd) Yield and Other Characteristics of Grain Sorghum Hybrids Tested at Monroeville Field, 1977^{1/}

| Brand name | Hybrid | Yield ^{2/} Bu/A | Lodging Pct. | Height Ft. | Head exsertion ^{3/} In. | Mid-bloom Date | Head type ^{4/} Rating |
|----------------|-----------------|-----------------------------|-----------------|---------------|--|-------------------|--------------------------------------|
| Pioneer | -----8225 | 55.5 | 0 | 4.6 | 14.0 | 7/20 | 1.0 |
| Pioneer | -----8311 | 55.4 | 0 | 3.8 | 15.5 | 7/19 | 1.3 |
| Funk's | -----G-399 | 55.2 | 0 | 3.6 | 13.8 | 7/15 | 1.5 |
| Funk's | -----G-642GBR | 54.0 | 0 | 4.0 | 16.8 | 7/22 | 2.8 |
| Growers | -----GSA 1180 | 47.7 | 0 | 4.2 | 15.5 | 7/16 | 1.0 |
| Northrup, King | -----Savannah 3 | 41.2 | 0 | 4.4 | 16.0 | 7/19 | 2.0 |
| Warner | -----W-832 | 38.1 | 0 | 4.4 | 15.3 | 7/18 | 1.0 |

^{1/}Planted May 25, 1977.

^{2/}Yields were determined from bagged heads and calculated at 56 lb. per bushel.

^{3/}Measured from terminal leaf to base of the head.

^{4/}1 = tight; 2 = medium; 3 = loose.

Table 19. Yield and Other Characteristics of Grain Sorghum Hybrids Tested Three Years at the Wiregrass Substation, Headland, 1975-77

| Brand name | Hybrid | Yield Bu/A | Lodging Pct. | Height Ft. | Head exsertion ^{1/} In. | Head type ^{2/} Rating |
|------------|-------------------|---------------|-----------------|---------------|--|--------------------------------------|
| Pioneer | -----B815 | 62.2 | 10 | 4.0 | 8.9 | 2.2 |
| Funk's | -----G-516BR | 57.8 | 12 | 3.4 | 6.7 | 3.0 |
| Pennington | -----Penngrain BR | 52.3 | 26 | 3.5 | 7.3 | 2.8 |
| Funk's | -----G-522 | <u>3/</u> | 4 | 3.2 | 5.8 | 2.8 |
| McNair | -----650 | <u>3/</u> | 8 | 3.3 | 5.5 | 2.8 |
| Surgro | -----ORO T | <u>3/</u> | 10 | 3.9 | 8.4 | 2.5 |
| Asgrow | -----Captain | <u>3/</u> | 4 | 3.4 | 7.7 | 2.7 |
| Surgro | -----ORO | <u>3/</u> | 6 | 3.2 | 6.0 | 2.8 |

^{1/}Measured from terminal leaf to base of the head.

^{2/}1 = tight; 2 = medium; 3 = loose.

^{3/}Omitted due to excessive bird damage in 1975. See 2-year average.

Table 20. Yield and Other Characteristics of Grain Sorghum Hybrids Tested Two Years at the Wiregrass Substation, Headland, 1976-77

| Brand name | Hybrid | Yield Bu/A | Lodging Pct. | Height Ft. | Head exsertion ^{1/} In. | Head type ^{2/} Rating |
|------------|--------------|---------------|-----------------|---------------|--|--------------------------------------|
| Funk's | G-522 | 53.6 | 7 | 3.0 | 3.9 | 2.8 |
| McNair | 650 | 51.9 | 12 | 3.0 | 3.5 | 2.8 |
| Surgro | ORO T | 50.9 | 14 | 3.5 | 5.9 | 2.3 |
| Growers | GSA 1334 BR | 50.1 | 16 | 3.1 | 3.9 | 3.0 |
| Growers | ML 135 | 46.3 | 16 | 2.9 | 3.6 | 2.6 |
| Pioneer | B815 | 45.9 | 15 | 3.6 | 6.6 | 2.3 |
| Funk's | G-516BR | 45.0 | 19 | 3.1 | 4.5 | 3.0 |
| Asgrow | Bug Off | 44.1 | 10 | 3.1 | 5.1 | 2.9 |
| Asgrow | Capitan | 43.3 | 6 | 3.2 | 6.0 | 2.5 |
| Surgro | ORO | 43.1 | 10 | 2.9 | 4.0 | 2.8 |
| Warner | W-744 | 40.3 | 10 | 3.2 | 4.8 | 3.0 |
| Pennington | Penngrain BR | 39.5 | 31 | 3.1 | 4.1 | 3.0 |
| Warner | W-832 | 25.4 | 40 | 3.2 | 5.5 | 2.1 |
| Growers | GSA 1180 | 24.9 | 18 | 3.1 | 5.5 | 2.0 |
| Funk's | G-722DR | 20.2 | 27 | 3.1 | 4.8 | 1.9 |

^{1/}Measured from terminal leaf to base of the head.

^{2/}1 = tight; 2 = medium; 3 = loose.

Table 21. Yield and Other Characteristics of Grain Sorghum Hybrids Tested at the Wiregrass Substation, Headland, 1977¹

| Brand name | Hybrid | Yield Bu/A | Lodging Pct. | Height Ft. | Head exertion ² / In. | Stand ³ / Pct. | Head type ⁴ / Rating |
|----------------|-------------------|---------------|-----------------|---------------|--|------------------------------|---------------------------------------|
| DeKalb | BR-64 | 54.9 | 1 | 3.5 | 4.3 | 81.3 | 3.0 |
| McNair | 650 | 46.8 | 1 | 2.8 | 1.8 | 77.5 | 2.5 |
| DeKalb | E-59+ | 45.0 | 1 | 2.9 | 3.3 | 83.8 | 2.3 |
| McCurdy | Birds-Off 81 | 44.1 | 1 | 3.0 | 3.5 | 77.5 | 2.8 |
| McNair | 695 | 42.7 | 3 | 3.0 | 2.3 | 71.3 | 2.5 |
| Growers | GSA 1334 BR | 42.3 | 2 | 2.8 | 2.3 | 80.0 | 3.0 |
| Funk's | G-516BR | 38.7 | 1 | 2.8 | 3.3 | 81.3 | 3.0 |
| Funk's | G-522 | 38.5 | 2 | 2.7 | 1.8 | 72.5 | 2.5 |
| Northrup, King | 2779 | 37.3 | 2 | 2.7 | 1.8 | 77.5 | 2.0 |
| Warner | W-744 | 36.5 | 2 | 3.0 | 3.8 | 81.3 | 3.0 |
| DeKalb | BR-65+ | 36.4 | 4 | 3.2 | 4.0 | 73.8 | 1.0 |
| McCurdy | Birds-Off 91 | 36.4 | 1 | 3.0 | 3.5 | 77.5 | 3.0 |
| McNair | 550 | 36.2 | 5 | 2.6 | 2.0 | 66.3 | 3.0 |
| Pioneer | B815 | 35.3 | 6 | 3.2 | 2.3 | 61.3 | 2.3 |
| Taylor-Evans | T-E Y101-R | 34.7 | 2 | 2.6 | 1.3 | 73.8 | 2.8 |
| Surgro | ORO T | 33.5 | 5 | 2.9 | 2.3 | 66.3 | 1.5 |
| Taylor-Evans | T-E Bird-A-Boo II | 33.1 | 4 | 2.7 | 2.3 | 72.5 | 2.8 |
| Growers | ML 135 | 33.1 | 4 | 2.7 | 1.5 | 78.8 | 2.3 |
| Surgro | ORO | 32.6 | 2 | 2.5 | 1.8 | 80.0 | 2.5 |
| McCurdy | M 51 YG | 32.4 | 8 | 2.7 | 1.8 | 60.0 | 2.5 |
| Asgrow | Capitan | 31.3 | 8 | 2.8 | 3.5 | 63.8 | 2.0 |
| Asgrow | Bug Off M | 30.6 | 4 | 2.8 | 1.8 | 68.8 | 2.5 |
| Warner | W-839DR | 30.6 | 2 | 2.6 | 1.3 | 71.3 | 1.5 |
| Funk's | G-662 | 29.3 | 1 | 2.8 | 2.8 | 70.0 | 2.5 |
| Pioneer | 8272 | 29.2 | 4 | 2.6 | 2.0 | 80.0 | 2.0 |
| Asgrow | Bug Off | 29.0 | 2 | 2.7 | 2.3 | 65.0 | 2.8 |
| Pennington | Penngrain BR | 26.1 | 5 | 2.7 | 2.5 | 58.8 | 3.0 |
| Northrup, King | Savannah 5 | 24.8 | 5 | 3.1 | 4.5 | 81.3 | 1.0 |
| Northrup, King | 2778 | 24.7 | 5 | 2.7 | 2.0 | 65.0 | 1.5 |
| Taylor-Evans | T-E Y 111 | 20.7 | 1 | 2.6 | 2.0 | 82.5 | 2.0 |

Continued

Table 21. (Cont'd) Yield and Other Characteristics of Grain Sorghum Hybrids Tested at the Wiregrass Substation, Headland, 1977^{1/}

| Brand name | Hybrid | Yield Bu/A | Lodging Pct. | Height Ft. | Head exsertion ^{2/} In. | Stand ^{3/} Pct. | Head type ^{4/} Rating |
|--------------|----------|---------------|-----------------|---------------|--|-----------------------------|--------------------------------------|
| Pioneer----- | 8225 | 20.5 | 3 | 3.0 | 2.8 | 73.8 | 1.0 |
| Warner----- | W-832 | 20.2 | 3 | 2.8 | 2.5 | 72.5 | 1.5 |
| McNair----- | 535 | 19.6 | 2 | 2.5 | 1.5 | 63.8 | 2.3 |
| Growers----- | GSA 1180 | 16.4 | 4 | 2.7 | 2.0 | 80.0 | 2.0 |
| Funk's----- | G-722DR | 13.9 | 3 | 2.8 | 3.0 | 67.5 | 1.0 |
| Funk's----- | G-399 | 7.7 | 4 | 2.5 | 2.0 | 60.0 | 2.0 |

^{1/}Planted May 24, 1977

^{2/}Measured from terminal leaf to base of the head.

^{3/}Poor stands due to severe drought and insect damage.

^{4/}1 = tight; 2 = medium; 3 = loose.

Table 22. Yield and Other Characteristics of Grain Sorghum Hybrids Tested at the Gulf Coast Substation, Fairhope, 1977^{1/}

| Brand name | Hybrid | Yield ^{2/} Bu/A | Lodging Pct. | Height Ft. | Head exsertion ^{3/} In. | Mid-bloom Date | Head type ^{4/} Rating |
|----------------|----------------------|-----------------------------|-----------------|---------------|--|-------------------|--------------------------------------|
| Northrup, King | ---Savannah 5 | 42.6 | 0 | 3.8 | 6.5 | 7/29 | 1.0 |
| Surgro | ---ORO T | 39.4 | 0 | 3.8 | 6.0 | 7/25 | 2.8 |
| Northrup, King | ---2778 | 32.9 | 0 | 3.5 | 5.8 | 7/20 | 2.5 |
| Pioneer | ---8815 | 32.2 | 0 | 3.8 | 4.3 | 7/26 | 2.0 |
| Funk's | ---G-722DR | 31.1 | 0 | 3.7 | 7.0 | 7/29 | 1.3 |
| DeKalb | ---BR-64 | 29.9 | 0 | 4.1 | 8.5 | 7/25 | 3.0 |
| DeKalb | ---E-59+ | 29.9 | 0 | 3.4 | 4.5 | 7/24 | 3.0 |
| Asgrow | ---Capitan | 29.3 | 0 | 3.3 | 5.8 | 7/25 | 3.0 |
| Surgro | ---ORO | 28.5 | 0 | 3.1 | 5.5 | 7/19 | 3.0 |
| Pioneer | ---8225 | 28.0 | 0 | 3.6 | 5.8 | 7/26 | 1.3 |
| DeKalb | ---BR-65+ | 27.5 | 0 | 3.8 | 7.0 | 7/25 | 2.0 |
| Pioneer | ---8272 | 27.0 | 0 | 3.1 | 5.5 | 7/25 | 2.8 |
| Funk's | ---G-522 | 26.8 | 0 | 3.0 | 4.3 | 7/20 | 3.0 |
| Taylor-Evans | ---T-E Bird-A-Boo II | 26.0 | 0 | 3.5 | 5.8 | 7/28 | 3.0 |
| Funk's | ---G-516BR | 25.1 | 0 | 3.6 | 5.5 | 7/26 | 3.0 |
| Growers | ---ML 135 | 24.4 | 0 | 3.2 | 3.5 | 7/26 | 3.0 |
| McNair | ---535 | 24.1 | 0 | 3.2 | 3.8 | 7/19 | 3.0 |
| McCurdy | ---Birds-Off 81 -D | 23.4 | 0 | 3.4 | 3.8 | 7/21 | 3.0 |
| Warner | ---W-832 -D | 23.1 | 0 | 3.5 | 5.3 | 7/25 | 3.0 |
| Warner | ---W-744 - | 23.0 | 0 | 3.5 | 4.5 | 7/21 | 1.0 |
| Funk's | ---G-662 | 22.6 | 0 | 3.5 | 5.8 | 7/27 | 3.0 |
| McNair | ---695 -D | 22.4 | 0 | 3.5 | 6.8 | 7/20 | 3.0 |
| McNair | ---550 -D | 22.2 | 0 | 3.5 | 5.5 | 7/26 | 2.8 |
| McNair | ---650 | 22.2 | 0 | 3.3 | 5.5 | 7/25 | 3.0 |
| Growers | ---GSA 1180 | 22.1 | 0 | 3.1 | 4.3 | 7/20 | 3.0 |
| McCurdy | ---M 51 YG | 21.4 | 0 | 3.3 | 4.5 | 7/20 | 2.5 |
| | | | | 3.2 | 5.0 | 7/21 | 3.0 |

Continued

Table 22. (Cont'd) Yield and Other Characteristics of Grain Sorghum Hybrids Tested at the Gulf Coast Substation, Fairhope, 1977^{1/}

| Brand name | Hybrid | Yield ^{2/} Bu/A | Lodging Pct. | Height Ft. | Head exsertion ^{3/} In. | Mid-bloom Date | Head type ^{4/} Rating |
|----------------|-------------------------|-----------------------------|-----------------|---------------|--|-------------------|--------------------------------------|
| Warner | W-839DR ¹⁾ | 21.2 | 0 | 3.2 | 4.0 | 7/25 | 2.5 |
| Pennington | Penngrain BR | 21.0 | 0 | 3.5 | 5.5 | 7/27 | 3.0 |
| Growers | GSA 1334 BR | 20.1 | 0 | 3.7 | 5.3 | 7/28 | 3.0 |
| McCurdy | Birds-Off 91 | 19.6 | 0 | 3.6 | 5.0 | 7/27 | 3.0 |
| Asgrow | Bug Off M ¹⁾ | 19.5 | 0 | 3.5 | 5.8 | 7/20 | 3.0 |
| Northrup, King | 2779 | 18.7 | 0 | 3.0 | 5.0 | 7/20 | 3.0 |
| Taylor-Evans | T-E Y 111 ¹⁾ | 18.5 | 0 | 3.3 | 6.0 | 7/21 | 2.8 |
| Asgrow | Bug Off | 18.4 | 0 | 3.1 | 4.0 | 7/20 | 3.0 |
| Taylor-Evans | T-E Y101-R | 15.6 | 0 | 2.9 | 4.8 | 7/22 | 3.0 |
| Funk's | G-399 ¹⁾ | 15.3 | 0 | 3.0 | 3.0 | 7/20 | 2.8 |

^{1/}Planted May 30, 1977.

^{2/}Yields determined from bagged heads and calculated at 56 lb. per bushel.

^{3/}Measured from terminal leaf to base of the head.

^{4/}1 = tight; 2 = medium; 3 = loose.

Source of Seed for the 1977 Grain Sorghum Tests

| Entry designation | Source of seed |
|----------------------------------|----------------------------|
| <i>Acco</i> Asgrow | Asgrow Seed Co. |
| Bug Off | P. O. Box 1059 |
| Bug Off M | Des Moines, Iowa |
| Capitan | |
| <i>Coker</i> DeKalb | DeKalb Agricultural |
| *BR-64 | Association, Inc. |
| *BR-65+ | Route 2 |
| E-59+ | Lubbock, Texas |
| F-67 | |
| Funk's | Louisiana Seed Co., Inc. |
| G-399 | P. O. Box 1867 |
| *G-516BR | Plainview, Texas |
| G-522 | |
| G-522DR | |
| G-623GBR | |
| G-642GBR | |
| G-662 | |
| G-722DR | |
| Growers | Growers Seed Association |
| ML 135 | P. O. Box 1656 |
| GSA 1180 | Lubbock, Texas |
| *GSA 1334 BR | |
| McCurdy | W. O. McCurdy and Sons |
| *Birds-Off 81 | Fremont, Iowa |
| *Birds-Off 91 | |
| M 51 YG | |
| M 89 YG | |
| McNair | McNair Seed Company |
| 535 | P. O. Box 706 |
| 550 | Laurinburg, North Carolina |
| 650 | |
| 654 | |
| 695 | |
| Northrup, King | Northrup, King and Co. |
| *Savannah 3 | P. O. Box 151 |
| *Savannah 5 | Columbus, Mississippi |
| 2778 | |
| 2779 | |

| | |
|---|--|
| Penngrain. *BR | Pennington, Inc. P. O. Box 290 Madison, Georgia |
| Pioneer. *B815 8225 8272 8311 | Pioneer Hi-Bred International, Inc. 1000 W. Jefferson St. Tipton, Indiana |
| Surgro ORO ORO T | R. C. Young Seed and Grain Company 624 27th Street Lubbock, Texas |
| Taylor-Evans *T-E Bird-A-Boo II T-E Y101-R T-E Y 111 | Taylor-Evans Seed Co. P. O. Box 68 Tulia, Texas |
| Warner *W-744 W-832 W-839DR | George Warner Seed Co., Inc. P. O. Box 1448 Hereford, Texas |

Ring Around

*Bird resistant